

Jon William Stables

Quality equestrian buildings

Built by British craftsmen



Price Lists and Specifications 2025

1 Stables

2 American Barns

3 Mobile Buildings

4 Equestrian Optional Features

5 Garaging

6 Garaging Optional Features

www.JonWilliamStables.co.uk
sales@j-w-s.co.uk Call Us Now 01380 850965

Stables

Intro

Ideal

Elite

			Plinth		Plinth		Plinth
Pony Box.	First unit	£2400	£160	£3200	£160	£4700	£215
3.0m x 3.6m	Additional unit	£1900	£160	£2400	£160	£3700	£215
Loose Box.	First unit	£2500	£165	£3300	£165	£4900	£220
3.6m x 3.6m	Additional unit	£2000	£165	£2500	£165	£3900	£220
Hunter Box.	First unit	-	-	£3700	£170	£5300	£225
4.2m x 3.6m	Additional unit	-	-	£2900	£170	£4300	£225
Foaling Box.	First unit	-	-	£4300	£175	£5900	£230
4.8m x 3.6m	Additional unit	-	-	£3500	£175	£4900	£230
Corner Box.							
5.0m x 3.6m	Additional unit	£2800	£175	£3600	£175	£5100	£230
5.4m x 3.6m	Additional unit	£2900	£180	£3700	£180	£5300	£235
Corner Tack Room.							
5.0m x 3.6m	Additional unit	£2600	£175	£3500	£175	£5100	£230
5.4m x 3.6m	Additional unit	£2700	£180	£3600	£180	£5300	£235
Corner Hay Barn Open fronted, <i>Elite Range includes 1pair of double doors.</i>							
5.4m x 3.6m	Additional unit	£2500	£180	£3300	£180	£5900	£235
7.2m x 3.6m	Additional unit	£3000	£200	£4200	£200	£6500	£255
Corner Unit Tack Room Partition Including Tack Room Door.	Additional unit	£500	£55	£700	£55	£1000	£85
Tack/Feed Room.							
1.8m x 3.6m	Additional unit	£1200	£145	£1800	£145	£2900	£200
2.4m x 3.6m	Additional unit	£1300	£155	£2000	£155	£3200	£210
3.6m x 3.6m	Additional unit	£1500	£165	£2300	£165	£3700	£220
Hay Barn Open fronted, <i>Elite Range includes 1pair of double doors.</i>							
3.6m x 3.6m	Additional unit	£1500	£165	£1900	£165	£3900	£220
5.4m x 3.6m	Additional unit	£2300	£180	£2900	£180	£5200	£235
7.2m x 3.6m	Additional unit	£2800	£200	£3600	£200	£6000	£255
Covered Walkway.							
2.4m x 3.6m	Additional unit	-	-	£1700	£155	£2600	£210
3.0m x 3.6m	Additional unit	-	-	£1800	£160	£2900	£215
3.6m x 3.6m	Additional unit	-	-	£2000	£165	£3200	£220
Wash Area <i>we recommend EVA wall lining mats are included to protect the walls from water spray at an additional cost of £700 .</i>							
3.6m x 3.6m	Additional unit	-	-	£1900	£175	£3200	£230
Ride Through Archway.							
3.6m x 4.8m	Additional unit	-	-	£4100	£165	£5300	£220

What is a Plinth? Our unique Plinth System, consisting of a galvanised steel plinth and a quality damp proof course, will protect the bottom of your new building. We advise against brick plinths as these become damp, move and crumble especially at the doorways. It is important to ensure the concrete is the correct size, therefore a base plan will be sent to you upon confirmation of order.

Delivery and Construction We are pleased to offer Free Delivery and Construction within a 50mile radius of our workshop in Netherstreet, Chippenham, Wiltshire. Additional mileage is chargeable. All Construction is carried out by our fully trained staff rather than subcontractors. All Sections bolted together for added strength.

Tack Room Security Pack Unfortunately in this day and age, everyone has concerns about security. We offer our hugely popular Security pack, which features a five lever mortice lock, security bolted hinges, internally enclosed trusses and a fully framed ledge and braced door backed with galvanised steel (not required for Elite Range) and mounted in its own frame. Intro and Ideal Range £450 **Included with the Elite Range.**

Translucent Roof Sheet Add additional light with our sun reflective translucent roof sheets that will assist with clipping and other intricate jobs. Intro Range and Ideal Range £60 **Elite Range Included.**

Stable Anti Cribbing Pack Full height kickboards and top door lined. Top door anti bite strips which include, steel lining to door stop, top door opening and leading edge of the top door. Bottom door anti bite strip extending 450mm to the front. Intro and Ideal Range £330 **Included with the Elite Range.**

Clock Tower All our towers feature fluted pillars and louvred sides. Dials can be fitted on as many sides as required. The roof and finial is moulded from a lead original in GRP composite using metal powder to simulate lead whilst reducing weight and cost. Roman or Skeleton dial designs (with optional illumination) can be specified, and the tower can also include digital bell chimes or real bronze bells. £2700 each.

All prices are plus VAT at the current rate

sales@j-w-s.co.uk

Call Us Now 01380 850965

1

American Barns

Ideal

Ideal +

Elite

Internal Units 3.6m x 3.6m.	Barn Size	Timber Internal partitioning 18mm Kickboards		Steel Internal partitioning 33mm Softwood Kickboards		Victorian Style Internal Partitioning 33mm Iroko Kickboards	
		Plinth		Plinth		Plinth	
4no Loose Boxes.	7.2m x 10.8m	£14500	£660	£21000	£660	£33000	£880
6no Loose Boxes.	10.8m x 10.8m	£21000	£990	£29200	£990	£45000	£1320
8no Loose Boxes.	14.4m x 10.8m	£27500	£1320	£37400	£1320	£57000	£1760
10no Loose Boxes.	18.0m x 10.8m	£34000	£1650	£45600	£1650	£69000	£2400
2no Loose Boxes Additional.	3.6m x 10.8m	£6500	£330	£8200	£330	£12000	£440

Prices are for stabling only, we offer a vast range of internal layouts some of which are shown below. Please call our sales team to discuss your requirements on 01380 850965 or email sales@j-w-s.co.uk

Example Pricing.

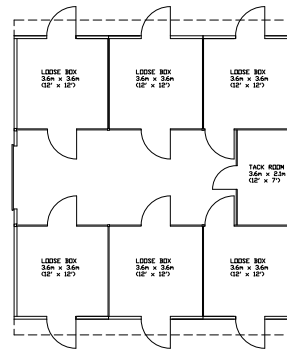
Barn Size 10.8m x 10.8m.	
6no 3.6m x 3.6m Loose Boxes.	£21000
1no 3.6m x 2.1m Tack Room front.	£550
8no Translucent roof sheets.	Inc
6no Softwood top rear doors.	£1500
1no 2.1m x 3.6m Tack Room Ceilings.	£500
Unique Plinth System.	£990
Total	£24540

Ideal

Ideal +

Elite

£29200	£45000
£1000	£1100
Inc	Inc
£1500	Inc
£500	£500
£990	£1320
£33190	£47920



Example Pricing.

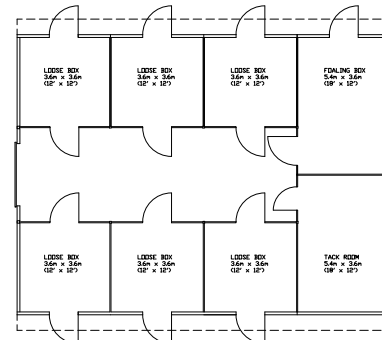
Barn Size 14.4m x 10.8m.	
6no 3.6m x 3.6m Loose Boxes.	
1no 3.6m x 5.4m Foaling Box.	
1no 3.6m x 5.4m Tack/Feed Room.	£27500
10no Translucent roof sheets.	Inc
7no Softwood top rear doors.	£1750
1no 3.6m x 5.4m Tack Room Ceilings.	£1280
Unique Plinth System.	£1320
Total	£31850

Ideal

Ideal +

Elite

£37400	£57000
Inc	Inc
£1750	Inc
£1280	£1280
£1320	£1760
£41750	£60040



Example Pricing.

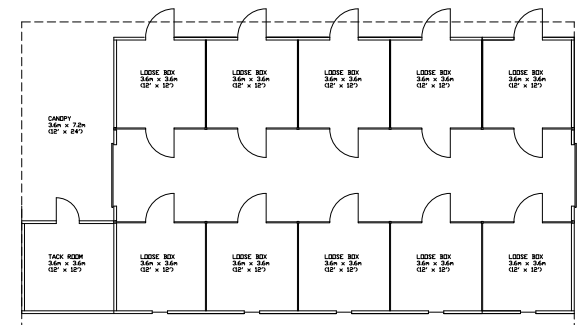
Barn Size 21.6m x 10.8m.	
10no 3.6m x 3.6m Loose Boxes.	
1no 3.6m x 3.6m Tack Room.	
1no 3.6m x 7.2m Canopy.	£40500
18no Translucent roof sheets.	Inc
5no Louvre Windows.	£1250
5no Softwood top rear doors.	£1250
Additional Access Door	£470
Unique Plinth System.	£1980
Total	£45450

Ideal

Ideal +

Elite

£53000	£80000
Inc	Inc
£1250	Inc
£1250	Inc
£470	Inc
£1980	£2840
£57950	£82840



What is a Plinth? Our unique Plinth System, consisting of a galvanised steel plinth and a quality damp proof course, will protect the bottom of your new building. We advise against brick plinths as these become damp, move and crumble especially at the doorways. It is important to ensure the concrete is the correct size, therefore a base plan will be sent to you upon confirmation of order.

Delivery and Construction We are pleased to offer Free Delivery and Construction within a 50mile radius of our workshop in Netherstreet, Chippenham, Wiltshire. Additional mileage is chargeable. All Construction is carried out by our fully trained staff rather than subcontractors. All Sections bolted together for added strength.

Ultimate Kickboards Our Ultimate kickboards consists of the same 33mm kickboards inserts and galvanised steel frames as used for the internal steel partitions. The steel frames are fitted to the outer timber walls of your building along with the kickboard inserts. We also fit hardwood ply to the eaves' height as standard, as shown below. This makes our Elite Range American Barns one of the strongest and most aesthetically pleasing timber American Barns on the market today.

All prices are plus VAT at the current rate

Mobile Buildings

Field Shelters

The units below include 1no 2.4m opening.

3.6m x 3.0m

3.6m x 3.6m

The units below include 1no 2.4m opening off set to one side.

5.4m x 3.0m

5.4m x 3.6m

The units below include 2no 1.9m openings.

6.0m x 3.0m

6.0m x 3.6m

The units below include 2no 2.4m openings.

7.2m x 3.0m

7.2m x 3.6m

The units below include 3no 1.9m openings.

9.0m x 3.0m

9.0m x 3.6m

The units below include 3no 1.9m openings.

10.8m x 3.0m

10.8m x 3.6m

You may decide to protect your building further with **Anti Bite Strips** fitted around the opening and to the four external corners of the building **Included on the Elite Range.**

Intro Ideal Elite

Anti
Bite
Strips

18mm
Rubber
Mats

£2500

£3100

£4400

£100

£300

£2600

£3200

£4200

£100

£360

£3400

£4200

£5900

£100

£480

£3500

£4300

£5800

£100

£540

£3600

£4500

£6400

£150

£540

£3700

£4600

£6300

£150

£600

£3800

£4800

£6900

£150

£600

£3900

£4900

£7000

£150

£720

£4800

£6200

£8800

£200

£780

£4900

£6300

£8900

£200

£900

£5800

£7000

£9800

£200

£900

£5900

£7100

£9900

£200

£1080

Field Shelters & Tack Rooms

1no 3.6m x 3.6m Shelter, 1no 3.6m x 1.8m Tack Room.

1no 3.6m x 3.6m Shelter, 1no 3.6m x 2.4m Tack Room.

1no 7.2m x 3.6m Shelter, 1no 3.6m x 1.8m Tack Room.

1no 7.2m x 3.6m Shelter, 1no 3.6m x 2.4m Tack Room.

Sledge Size

5.4m x 3.6m

6.0m x 3.6m

9.0m x 3.6m

9.6m x 3.6m

£4200

£4800

£7900

£100

£540

£4400

£5100

£8300

£100

£600

£5800

£6600

£10500

£150

£900

£6000

£6900

£10900

£150

£960

Intro Ideal Elite

Anti
Bite
Strips

18mm
Rubber
Mats

Stables

1no 3.6m x 3.6m Loose Box.

2no 3.6m x 3.6m Loose Boxes.

3no 3.6m x 3.6m Loose Boxes.

Sledge Size

3.6m x 3.6m

7.2m x 3.6m

10.8m x 3.6m

£3000

£3800

£5400

£360

£5200

£6500

£9500

£720

£7500

£9300

£13700

£1080

Intro Ideal Elite

Stables & Tack Rooms

1no 3.6m x 3.6m Loose Box, 1no 3.6m x 1.8m Tack Room.

1no 3.6m x 3.6m Loose Box, 1no 3.6m x 2.4m Tack Room.

2no 3.6m x 3.6m Loose Boxes, 1no 3.6m x 1.8m Tack Room.

2no 3.6m x 3.6m Loose Boxes, 1no 3.6m x 2.4m Tack Room.

Sledge Size

5.4m x 3.6m

6.0m x 3.6m

9.0m x 3.6m

9.6m x 3.6m

£4400

£5900

£8600

£540

£4500

£6100

£8900

£600

£6800

£8600

£12700

£900

£6900

£8800

£13000

£960

Intro Ideal Elite

Stables & Field Shelters

1no 3.6m x 3.6m Loose Box, 1no 3.6m x 3.6m Field Shelter.

2no 3.6m x 3.6m Loose Boxes, 1no 3.6m x 3.6m Field Shelter.

Sledge Size

7.2m x 3.6m

10.8m x 3.6m

£4700

£5900

£8700

£100

£720

£7000

£8700

£12900

£150

£1080

Intro Ideal Elite

Delivery and Construction We are pleased to offer Free Delivery and Construction within a 50mile radius of our workshop in Netherstreet, Chippenham, Wiltshire. Additional mileage is chargeable. All Construction is carried out by our fully trained staff rather than subcontractors. All Sections bolted together for added strength.

Stable Anti Cribbing Pack Full height kickboards and top door lined. Top door anti bite strips which include, steel lining to door stop, top door opening and leading edge of the top door. Bottom door anti bite strip extending 450mm to the front. Intro and Ideal Range £330 **Included with the Elite Range.**

Tack Room Security Pack Unfortunately in this day and age, everyone has concerns about security. We offer our hugely popular Security pack, which features a five lever mortice lock, security bolted hinges, internally enclosed trusses and a fully framed ledge and braced door backed with galvanised steel (not required for Elite Range) and mounted in its own frame. Intro and Ideal Range £450 **Included with the Elite Range.**

All prices are plus VAT at the current rate

sales@j-w-s.co.uk

Call Us Now 01380 850965

3

Equestrian Optional Features

Intro Ideal Elite

Roof

Sun reflective translucent roof sheet each.	£60	£60	Included
Metal box profile sheets laid over 11mm Smart Ply OSB3 lining and membrane £250 plus per M2.	£30	£20	£20
Cemsix roofing in grey colour options available £300 plus per M2.	-	£15	£15
Coloured Onduline, red, green or brown per M2.	-	£10	£10
Felt Shingle Roofing includes upgrade to 22.5 degree roof pitch £150 plus per M2.	-	£60	£60
Bronzed Polycarbonate Roofing to create sky light in felt shingle roofing.	-	POA	POA
Western red Cedar shingles & shakes M2.	-	POA	POA
Light weight tile effect metal roofing.	-	POA	POA
Synthetic slate tiles.	-	POA	POA
Rear guttering including down pipes per meter.	£20	£20	Included
Fibre Glass Clock Tower including face, re-synchroniser and weathervane.	-	£2750	£2750

Canopy

2.0m Canopy with softwood 150mm decorative posts & curved braces per meter.	-	£200	£200
2.6m Canopy with softwood 150mm decorative posts & curved braces per meter.	-	£250	£250
Canopies above in Oak add £300 plus per unit.	-	£300	£300
Saddle Stones cut from Bath Stone each.	-	£150	£150

Doors

Top door Softwood.	£125	-	-
Top rear door Softwood including anti bite strips <i>(free option with Elite American Barns)</i> .	£250	£250	£250
Top rear door Hardwood and steel including steel frame anti bite strips.	-	-	£500
Top rear door Hardwood and steel combined with a four blade louvre window.	-	-	£700
Top stable door opening anti bite strips.	£120	£120	-
Extended bottom door anti bite strip.	£60	£60	FOC
Softwood Hay Barn double doors 2.4m wide.	£450	£450	-
Galvanised steel and hardwood Hay Barn doors secured with 5 lever mortice lock per pair.	-	-	£1200

Windows

4 Blade louvre window.	£275	£275	-
6 Blade louvre window <i>(free option with Elite American Barn)</i>	-	-	£300

Please note the above windows are not storm proof & can not be guaranteed water tight.

Kickboards, Lining & EVA wall protection

Smart Ply OSB3 kickboards to eaves per 3.6m stable.	£220	£220	Included
18mm ply kickboards to 1.2m per 3.6m stable.	-	£80	-
18mm ply kickboards to eaves per 3.6m stable.	-	£330	£310
Full lining to Tack Room and Hay Barns.	-	POA	Included
Tack Room ceiling per M2.	-	POA	POA
EVA wall mats fixed over Kickboards to 1.2m per 3.6m stable.	-	£600	£600
EVA wall mats fixed over Kickboards to 1.8m per 3.6m stable (includes full height kickboards).	-	£1420	£1200

Talk Bars

Heavy duty 1.2m wide Galvanised steel frames with 20mm bars.	£250	£250	£250
--	------	------	------

Rubber Floor Mats

1.2m x 1.8m x 17mm Rubber Mats 25kg, fitted when delivered with building.	£60	£60	£60
---	-----	-----	-----

Mobile Buildings (in addition to the items above)

4no Ground Anchors J peg design.	£100	£100	£100
2no Typhoon Anchors including stabilising chains and D shackles.	£200	£200	£200
Galvanised Steel Gate to front including Stockbord covering for safety.	£275	£275	£275
Galvanised Steel Partition Gate including Stockbord covering for safety.	£315	£315	£315
Stable conversion kit (bottom door only).	£450	£450	-
Stable Conversion Kit including top and bottom door and fixed window.	£550	£550	£1350
Partition with galvanised sledge beam under.	£350	£350	£685
Partition with Tack Room door and galvanised sledge beam under.	£600	£600	£1350
2no Slide Rails.	£100	£100	£100

All prices are plus VAT at the current rate

Garages & Workshops

Maximum door clearance Ideal 1900mm Elite 2190mm.

Includes 1 pair of 2.1m double doors in the 3.0m **gable** end.

3.0m x 4.8m

3.0m x 5.4m

3.0m x 6.0m

3.0m x 7.2m

Includes 1 pair of 2.4m double doors in the 3.6m **gable** end.

3.6m x 4.8m

3.6m x 5.4m

3.6m x 6.0m

3.6m x 7.2m

Includes 2 pairs of 2.1m double doors in the 6.0m **eave** side.

6.0m x 5.4m

6.0m x 6.0m

Includes 2 pairs of 2.4m double doors in the 7.2m **eave** side.

7.2m x 5.4m

7.2m x 6.0m

Includes 3 pairs of 2.1m double doors in the 9.0m **eave** side.

9.0m x 5.4m

9.0m x 6.0m

Includes 3 pairs of 2.4m double doors in the 10.8m **eave** side.

10.8m x 5.4m

10.8m x 6.0m

Includes 4 pairs of 2.1m double doors in the 12.0m **eave** side.

12.0m x 5.4m

12.0m x 6.0m

Includes 4 pairs of 2.4m double doors in the 14.4m **eave** side.

14.4m x 5.4m

14.4m x 6.0m

Ideal

Plinth

£4500

£170

£4600

£175

£5000

£180

£5200

£190

£4700

£175

£4800

£180

£5200

£185

£5500

£195

£7100

£360

£8100

£380

£7900

£380

£9100

£400

£9500

£440

£11400

£460

£10500

£470

£12400

£490

£12000

£520

£13900

£540

£14100

£550

£165000

£570

Elite

Plinth

£6400

£225

£6600

£235

£7300

£245

£7800

£255

£6500

£230

£7000

£240

£7600

£250

£8100

£260

£10500

£550

£11600

£570

£11600

£570

£12900

£590

£14700

£630

£16400

£650

£16200

£660

£18100

£680

£18300

£700

£20400

£720

£20000

£730

£22400

£750

Featheredge
Cladding

Felt Shingle
Roofing

£330

£1100

£370

£1200

£410

£1300

£500

£1500

£340

£1300

£380

£1400

£420

£1500

£510

£1700

£480

£2100

£480

£2300

£500

£2400

£500

£2700

£560

£3000

£560

£3300

£580

£3500

£580

£3900

£640

£3900

£640

£4300

£660

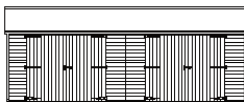
£4600

£660

£5100

GABLE

EAVES



Carriage Houses

Ideal

Plinth

£6200

£360

£7200

£380

£7000

£380

£8200

£400

£8300

£440

£10200

£460

£9300

£470

£11100

£490

£10400

£520

£12200

£540

£12400

£550

£14700

£570

Elite

Plinth

£7900

£550

£9000

£570

£9100

£570

£10400

£590

£10700

£630

£12500

£650

£12300

£660

£14300

£680

£12900

£700

£15100

£720

£14700

£730

£17200

£750

Featheredge
Cladding

Felt Shingle
Roofing

Oak
Facade

£480

£2100

£480

£2300

£500

£1000

£500

£1000

£560

£1200

£560

£1200

£580

£1300

£580

£1300

£640

£1500

£640

£1500

£660

£1700

£660

£1700

2no 3.0m bays, openings in the 6.0m **eave** side.

6.0m x 5.4m

6.0m x 6.0m

2no 3.6m bays, openings in the 7.2m **eave** side.

7.2m x 5.4m

7.2m x 6.0m

3no 3.0m bays, openings in the 9.0m **eave** side.

9.0m x 5.4m

9.0m x 6.0m

3no 3.6m bays, openings in the 10.8m **eave** side.

10.8m x 5.4m

10.8m x 6.0m

4no 3.0m bays, openings in the 12.0m **eave** side.

12.0m x 5.4m

12.0m x 6.0m

4no 3.6m bays, openings in the 14.4m **eave** side.

14.4m x 5.4m

14.4m x 6.0m

What is a Plinth? Our unique Plinth System, consisting of a galvanised steel plinth and a quality damp proof course, will protect the bottom of your new building. We advise against brick plinths as these become damp, move and crumble especially at the doorways. It is important to ensure the concrete is the correct size, therefore a base plan will be sent to you upon confirmation of order.

Delivery and Construction We are pleased to offer Free Delivery and Construction within a 50mile radius of our workshop in Netherstreet, Chippenham, Wiltshire. Additional mileage is chargeable. All Construction is carried out by our fully trained staff rather than subcontractors. All Sections bolted together for added strength.

All prices are plus VAT at the current rate

Oak Facade Create an English Heritage appearance with our optional feature oak façade. Fascia's, posts and curved braces shaped from English oak.

SHINGLE ROOFING Add the ultimate finishing touch to your building. A felt or cedar shingle roof with a choice of designs and colours. Along with the shingles we will fit two timber louvres to each gable for additional ventilation.

sales@j-w-s.co.uk

Call Us Now 01380 850965

5

Garaging Optional Features

Ideal Elite

Roof

Sun reflective translucent roof sheet.	£60	Included
Metal box profile sheets laid over 11mm Smart Ply OSB3 lining and membrane £250 plus per M2.	£20	£20
Cemsix roofing in grey colour options available £300 plus per M2.	£15	£15
Coloured Onduline, red, green or brown per M2.	£10	£10
Felt Shingle Roofing includes upgrade to 22.5 degree roof pitch £300 plus per M2.	£50	£50
Bronzed Polycarbonate Roofing to create sky light in felt shingle roofing.	POA	POA
Western red Cedar shingles M2.	POA	POA
Light weight tile effect metal roofing.	POA	POA
Synthetic slate tiles.	POA	POA
Fibre Glass Clock Tower including face, re-synchroniser and weathervane.	£2500	£2500
Barn hip ends <i>(not available with Onduline roofing)</i> .	POA	POA
Dormer Gable <i>(not available with Onduline roofing)</i> .	POA	POA
Cat slide roof <i>(not available with Onduline roofing)</i> .	POA	POA

Personal Doors

Softwood framed ledged and braced secured with a galvanised Brenton pad bolt and clad with shiplap each.	£150	£150
Security pack for the above door which features a five lever mortice lock, security bolted hinges & backed with galvanised steel plate each.	£125	£125
Galvanised steel and hardwood door secured with a 5 lever mortice lock per each.	-	£750
Aluminium half glazed door, White, or Anthracite.	£1000	£1000

Double Doors

Ideal Range 2.1m or 2.4m wide. Framed ledged and braced secured with a galvanised Brenton pad bolt and clad with shiplap per pair. To include front section to fit Carriage House apertures.	£600	-
Security pack for the above door which features a five lever mortice lock, security bolted hinges & backed with galvanised steel plate per pair.	£250	-
Galvanised steel and hardwood secured with 5 lever mortice lock per pair. To include front section to fit Carriage House apertures.	-	£1800
French Doors aluminium Anthracite.1800mm	£2000	£2000
Roller shutter doors (electrically operated) 2.1m from	-	POA
Automated opening systems .	-	POA

Windows

24mm double glazed UPVC windows in Anthracite Grey.		
Casement 1050mm x 600mm.	£450	£450
Casement 1050mm x 1200mm (stock item)	£560	£560
Casement 1050mm x 1800mm	£750	£750
28mm double glazed aluminium windows Anthracite Grey.		
Casement 1050mm x 600mm.	£560	£560
Casement 1050mm x 1200mm.	£750	£750
Casement 1050mm x 1800mm	£1000	£1000

Other Optional Features

Saddle Stones cut from Bath stone each <i>(carriage houses only)</i>	£150	£150
Floor, 18mm Smart Ply OSB3 laid over 75mm x 50mm framing @ 400mm centres M2.	£50	£50
Partition wall to create a secure area in a Carriage House, includes lining to ridge.	£500	£600

Insulation

At Jon William Stables we are able to insulate your ceiling, walls and floor but due to building regulations when insulating a building over 30m2 you must create an external cavity to allow any moisture to escape. For this reason we price each job individually as additional windows, doors etc will impact on the price. Please contact us on 01380850965 to discuss your requirements.

All prices are plus VAT at the current rate