



Jon William Stables

Quality equestrian buildings
built by British craftsmen



How It All Started



Forty years ago (1891) William Pike was known for miles around as a “maker of carriages for the nobility and gentry,” and many a smart pony-chaise did he turn out of his workshops, where he had the help of his sons as they became of working age.

Jon William Stables, in its current business, was formed in 1965 by the grandson of William Pike, Gordon Pike. He began with a successful fencing business, and owned the first saw mill in Wiltshire. He was succeeded by Evelyn Pike in 1996. The business is still owned by Evelyn, and the day to day running is now handled by her son, Matthew Pike who has been working in the business since 1988.

... excerpt taken from 'The Archive Photographs Series Trowbridge', ©Chalford Publishing Company, 1997.



Mr William Pike, born 1847, died November 1931.

Excerpt featured 'death of Mr William Pike – Man of Many trades and a Genius for Business'

JON WILLIAM STABLES We are delighted to present our brochure which will demonstrate why you should choose Jon William Stables to supply your new timber building. We provide full details of our comprehensive range of products including stables, mobile buildings, American barns and garaging. We also showcase some of the bespoke projects we have completed for our clients over the years.

Of course if you don't find exactly what you are looking for we would be delighted to discuss your individual requirements by telephone or in person. You are very welcome to visit our main office at Netherstreet, near Chippenham, Wiltshire.

BUILT BY CRAFTSMEN When you purchase any of our fine range of quality buildings we want you to feel proud you have selected a Jon William Stables product. We do this by creating equestrian products that have been built by craftsmen. We strive to build the best possible product we can, so we are confident you will be proud to own it. We firmly believe our business cornerstones drive us to perfect every Jon William Stables product.

EXPERTISE Our first cornerstone is expertise. We are a family run business, established in 1965. Doing business with a family firm means you get both experience and expertise. We trained with our father, who trained with his father, and we put that knowledge and professionalism to good use – giving you a quality product.

QUALITY Quality is our second cornerstone. We only use quality products of a sustainable nature bought from environmentally friendly suppliers that echo our own high values and care about our world. We dedicate ourselves to turning the raw material into a superb product and apply the same attention to detail whether you require a single mobile shelter or a complete stable complex.

DESIGN This quality is demonstrated throughout our design values, our third cornerstone. We offer you a comprehensive selection, including the opportunity to create a completely unique and bespoke project, something we have perfected. Innovative style permeates throughout our entire range, each of which have unique features. Our window designs afford ventilation rather than creating draughts. Our arbour vents allow air to

circulate in the roof, reducing condensation which is better for your building and the health of your animal. It is all part and parcel of the quality and service you would expect from Jon William Stables.

SERVICE And that's the final cornerstone of our business – service. For you to be truly proud of your purchase you have to be delighted with both the product and the service you receive. We understand that your experience of dealing with Jon William Stables will depend upon us meeting your expectations. In both these regards we do not use sub-contractors to construct our buildings, we only use our fully trained employees. This means everyone you deal with understands the importance of a high standard of service and they will care as much about your building and the welfare of your horse as you do.

We want you to be proud of your purchase. We are proud to create it for you.

Matthew Pike,

Managing Director.

Contents

Sponsorship

Riders & Drivers	3
------------------	---

Stables

Introduction	4
Intro Range	5 - 6
Ideal Range	7 - 10
Elite Range	11 - 15

American Barns

Introduction	18
Ideal Range	19 - 20
Elite Range	21 - 25

Mobile Buildings

Introduction	27
Intro Range	28 - 29
Ideal Range	30 - 31
Bespoke	32

Garaging and Workshops

Introduction	34
Ideal Range	35 - 38
Elite Range	39 - 43

Building Specifications

Intro Range	45
Ideal Range	46
Elite Range	47
Optional Features	48 - 49

Doing Business with Jon William Stables

About Our Wood, Treatment, Delivery etc	50 - 51
---	---------

How Strong Are Our Elite Range Doors?

The simple answer to that question is that they are very strong, below is a 2600kg Range Rover parked on four top doors raised off the ground 150mm.

All of our Elite Range doors are steel framed with 150mm x 38mm Iroko hardwood inserts Set in a steel door frame. All frames and ironwork are fully galvanised for protection against the elements.



Sponsored Riders & Drivers

Sophie Wells MBE: Paralympic, World and European Gold Medallist
Paralympic Team Gold and Two Individual Silver Medals at London 2012!



A superb achievement, Team Gold and two Individual Silver medals, all with personal best scores! Well done Sophie and Noki!

Sophie Wells is an outstanding young athlete in the spectacular and technically demanding equestrian sport of Dressage. At the age of 23 she is reigning World and European Champion at Para

Dressage Grade IV, with eleven Championship Gold Medals between her two top horses, Pinocchio and Valerius. She has also ridden as an able-bodied athlete at the Young Rider European Dressage Championships and the Young Rider World Cup, and now rides at Grand Prix!

Darling Dressage.

Elli is training at Grand Prix and has a real talent for producing young horses.



“Elli Darling is a BD registered and UKCC Level 2 trainer, based in Stradbroke, Suffolk. She is training at Grand Prix and has a real talent for producing young horses. Elli has a small yard comprised of her own horses, liveries and horses that she competes for owners. She is currently riding and competing in everything from four year-old classes to Inter I level.”

This is an exciting time for Darling Dressage as they expand their yard to accommodate the growing business. Jon William Stables is proud to be part of the expansion plans and is providing Elli with a purpose built Elite Range American Barn and a long-term sponsorship deal.

Jessica Weston is a professional horse trainer and competition rider.
At the young age of 23 she has established both a successful equestrian career and created the outstanding facilities at Equestrian Heights.



Jessica Weston operates from Equestrian Heights, a purpose built, luxurious equestrian centre based in the beautiful countryside just outside Seend, Wiltshire. The centre boasts excellent facilities for the training and development of horses in order for them to achieve their best.

Jessica Weston is committed and passionate about getting the best from every horse. This dedication has helped establish her reputation for improving young or inexperienced performance horses through the competition levels.

George Lines British F3 Cup Racing Driver.

Raced against and beat F1 driver Max Verstappen!



A George Line of Thurstaston begins his next motorsport challenge swapping his Mazda MX5 for a Dallara Formula 3 single seater. He is competing in the British F3 Cup with rounds held at the major racing circuits in the UK, Silverstone, Brands Hatch, Donnington, Olton Park and Snetterton, with a European Continental round at Spa in Belgium.

George is now 20 years old. He began his racing career in karting when he was 10 years old and graduated to competing at a National and International level, where he raced against and beat Max Verstappen! George moved from karting to cars where he has a successful season in his Mazda MX5, picking up podiums and lap records.

Step Dad Robin Langford, remembered by many for his motorsport career racing and rallying minis nationally and internationally, whilst running Langrops of Anstey, continues to be main mechanic and oily-rag.

Stables

We understand that choosing the right stable for you and your horse takes time. We are confident that at Jon William Stables you have come to the right place. We are a family company that cares about the buildings we produce. Every single one is an advertisement for us, so we make sure we get it right.

We have been manufacturing stables since 1983. Over the subsequent years our original designs have been continuously improved in consultation with vets, horse trainers and equestrian champions. This has resulted in our current portfolio of informed and thoughtfully designed buildings: the Intro, Ideal and Elite ranges.

Whether you need one or two stables or a commercial complex, including tack rooms, storage barns and offices, we are able to meet your requirements with a bespoke design built using the appropriate quality products.



Intro Range Stables

Our Intro range provides a robust stable manufactured using high quality materials without some of the standard features found in the Elite and Ideal Ranges.

It is a range that provides a starting point for your stabling at an affordable price, whilst still providing peace of mind for years to come.



*Loose Boxes and Corner Hay Barn.
Optional Feature Extended Door Anti-Bite Strips.*



*Working yard.
Optional Feature Extended Door Anti-Bite Strips.*

TRANSLUCENT ROOF SHEET Add additional light with our sun reflective translucent roof sheets that will assist with clipping and other intricate jobs.



*Loose Boxes, Corner Box and Hay Barn.
Optional Feature Hopper Windows and Top Doors.*



"Just a quick note to say I am delighted with my stables they are just what I was looking for and my horses are very happy now!"

Emma Callan.



PLINTH SYSTEM We are the only manufacturer to offer this product. It comprises of a unique galvanised steel plinth and quality damp proof course, protecting the bottom of your new building.



FEATURES

- 2.135m (7') eaves height.
- 75mm x 50mm (3" x 2") framework.
- 16mm shiplap cladding.
- Pressure treated timber internally and externally.
- 11mm (½") kickboards to 1.2m (4').
- 0.9m (3') front canopy.
- Black Onduline roofing.
- Front guttering including down pipes.
- Our unique plinth system.

Ideal Range Stables

The Ideal range includes many features that are considered as optional extras by other manufacturers. The range offers a high specification at exceptional value.

Whilst the Ideal range design provides a practical solution to your stabling, we are able to include bespoke additions as required.



Upgrade
Fully adjustable strap hinges.

STABLE ANTI-CRIB PACK Full height kickboards and top door lined. Top door anti-bite strips which include steel lining to door stop, top door opening and leading edge of the top door. Bottom door anti-bite strip extending 450mm to the front.



Upgrade
Four blade louver windows.



Loose Boxes.
Optional Feature Anti-Cribbing Packs.



*Loose Boxes, Hay Barn, Tack Room and Corner Box.
Optional Feature Extended Canopy.*

EXTENDED CANOPY The option of an extended canopy with decorative posts will give you extra protection from the weather and a unique finish to your building.

We are delighted with our new stables, as are our horses! The build quality is excellent and has been greatly admired by visitors.

Vicky & Rob.



Stables constructed for Grand National Winner Jason Maguire



Stable Complex and Extra High Hay Barn



Loose Boxes, Tack Room and Hay Barn.



Horse Box Garage.



*Loose Boxes, Feed Room and Tack Room.
Optional Feature Anti Cribbing Pack and Felt Shingle Roofing.*



*Corner Tack Room and Loose Boxes.
Optional Feature Anti Cribbing Pack.*

*Hay Barn, Loose Boxes, Fees Shed and Free Standing Tack Room.
Optional Feature Anti Cribbing Pack.*



PLINTH SYSTEM A solid platform upon which to build is essential, and we strongly recommend that you start with a concrete base. This will enable us to fit our unique plinth system consisting of a galvanised steel plinth and a quality damp proof course which will protect the bottom of your new building. We advise against brickwork as our clients have had problems with buildings moving and bricks becoming loose especially on the doorways.



Bespoke Complex constructed in Guernsey

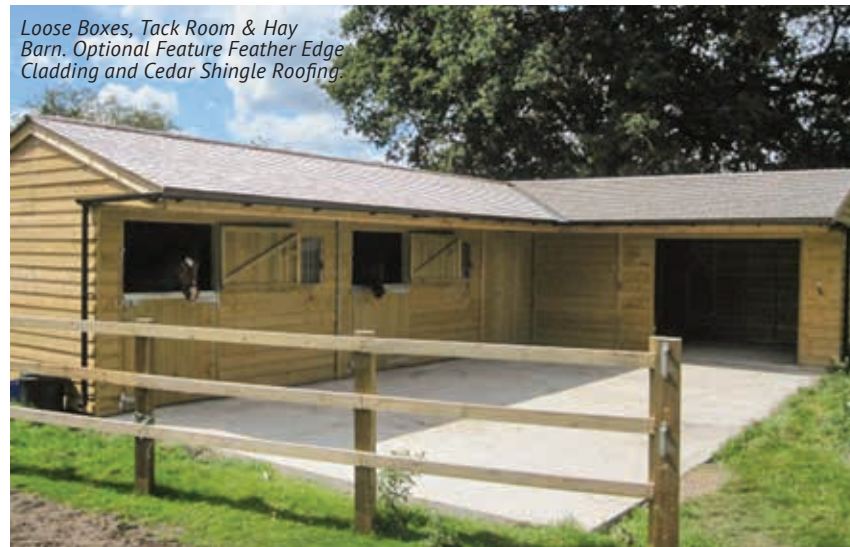


*Corner Hay Barn and Loose Boxes.
Optional Feature Anti Cribbing Pack and 2.4m Extended Canopy.*



"It has been a pleasure working with Jon William Stables from beginning to end. Personnel within the office were reactive and accommodating in meeting my requirements. The construction team were extremely hard working and their willingness to please was outstanding. An absolute pleasure to have working on the project."

Paula Burbridge, Guernsey.



Purpose built Ideal Range livery yard.



FEATURES

- 2.135m (7') eaves height.
- 75mm x 50mm (3" x 2") framework. Double uprights on all doorways.
- 16mm shiplap cladding.
- Pressure treated timber internally and externally.
- 18mm (¾") kickboards to 1.2m (4').
- 1.2m (4') front canopy.
- Black Onduline roofing lined with 11mm (½") OSB.
- Front guttering including down pipes.
- Our unique plinth system.
- Upgrade, Four blade louvre window fitted with galvanised steel bars for safety.
- Upgrade, Fully adjustable strap hinges.
- We have created a unique arbour vent for our stables that is fitted under the canopy.

Elite Range Stables

Creating a premier stable yard is easily achieved with our Elite range.

Manufactured to the highest of design specification providing extra style, creativity and practicality to satisfy the most discerning of customer.

Our exceptionally strong steel framed doors will withstand the test of time. Together with the 100mm x 50mm (4" x 2") framework, 2.4m (8') eaves height and the addition of a felt shingle roof, the Elite range is a substantial build, looks fantastic and will be the envy of your equestrian neighbours.



Loose Boxes. Optional Feature Cedar Shingles roofing and Oak Frontage.

SHINGLE ROOFING Add the ultimate finishing touch to your stables. A felt or cedar shingle roof with a choice of designs and colours. Along with the shingles we will fit two timber louvres to each gable for additional ventilation.



Private Yard comprising of 3 Foaling Boxes, Tack room, Wash Area, Hay Barn and Feed Room. Optional Feature 1.8m Extended Canopy, Felt Shingle Roofing and Dormer Gable Feature.



Loose Boxes, Optional Feature Felt Shingle Roofing and Barn Doors.



Loose Boxes. Optional Feature Felt Shingle Roofing.



Happy customers.



*Stable and Garage Complex.
Optional Feature Felt Shingle Roofing, Extended Canopy and Oak Detailing.*



*Loose Box, Hay Barn and Tack Room.
Optional Feature Featheredge Cladding, Cedar Shingle Roofing, Extended Canopy, Oak Detailing and Staddle Stones.*

EXTENDED CANOPY 1.8m or 2.4m. Add a touch of extra style and protection from the weather with our extended canopy with ornate supporting posts and curved braces.



*Loose Boxes. Optional Feature Featheredge Cladding,
Felt Shingle Roofing, Extended Canopy
Oak Detailing and Staddle Stones.*

STADDLE STONES Made from high quality Bath stone. Add a touch of individuality to your extended canopy.



*Loose Boxes and Corner Hay Barn.
Optional Feature Felt Shingle Roofing, Extended Canopy.*

OAK FAÇADE Create an English Heritage appearance with our optional feature oak façade. Fascia's, posts and curved braces shaped from English oak.



Stable Complex. Optional Feature Clock Tower, Felt Shingle Roofing, Extended Canopy Top Rear Doors and Specialist Paint Application.

CLOCK TOWER All our towers feature fluted pillars and louvred sides. Dials can be fitted on as many sides as required. The roof and finial is moulded from a lead original in GRP composite using metal powder to simulate lead whilst reducing weight and cost.

Roman or Skeleton dial designs (with optional illumination) can be specified, and the tower can also include digital bell chimes or real bronze bells.





Elite Range Stables with clay tiled roof.

"We absolutely love our new elite stable yard that your team delivered to exacting standards. The robust galvanised doors Ouse quality and the decision to upgrade to felt shingle roof and a last minute clock tower really did give it the high end finish we were looking for. The yard has become a special place for us to pamper our horses for many years to come."

"We cannot recommend you highly enough"

Marie & Will.





Loose Boxes, Pony Boxes and Corner Box.

"We have a working farm with the addition of livery and polo yards (and pretty discerning clients). There is subsequently always a balance between cost and quality and Jon William Stables met both criteria for us, and did so with excellent service."

Kate, Sunningdale.



*Loose Boxes, Tack Room, Corner Box and Walk Way.
Optional Feature elt Shingle Roof and Clock Tower.*



Elite Range Stables.

PLINTH SYSTEM We are the only manufacturer to offer this product. It comprises of a unique galvanised steel plinth and quality damp proof course, protecting the bottom of your new building.

FEATURES

- 2.480m (8") eaves height.
- 100mm x 50mm (4" x 2") framework. Double uprights on all doorways.
- 19mm shiplap cladding.
- Pressure treated timber internally and externally.
- 18mm (¾") full height kickboards.
- 1.2m (4') front canopy.
- Black Onduline roofing lined with 11mm (½") OSB.
- Front & Rear guttering including down pipes.
- Heavy duty galvanised steel framed doors with hardwood inserts, set in a steel frame.
- Our unique plinth system.
- Six blade louvre window fitted with galvanised steel bars for safety.
- We have created a unique arbour vent for our stables that is fitted under the canopy.



Stables

		Intro		Ideal		Elite	
			Plinth		Plinth		Plinth
Pony Box.	First unit	£1900	£95	£2400	£95	£3800	£110
3.0m x 3.6m	Additional unit	£1400	£95	£1900	£95	£3100	£110
Loose Box.	First unit	£2000	£100	£2500	£100	£3900	£120
3.6m x 3.6m	Additional unit	£1500	£100	£2000	£100	£3200	£120
Hunter Box.	First unit	-	-	£3000	£105	£4400	£130
4.2m x 3.6m	Additional unit	-	-	£2500	£105	£3700	£130
Foaling Box.	First unit	-	-	£3500	£110	£4900	£140
4.8m x 3.6m	Additional unit	-	-	£3000	£110	£4200	£140
Corner Box.							
5.0m x 3.6m	Additional unit	£2100	£110	£2900	£110	£4300	£150
5.4m x 3.6m	Additional unit	£2300	£115	£3100	£115	£4500	£160
Corner Tack Room.							
5.0m x 3.6m	Additional unit	£2100	£110	£2800	£110	£4200	£150
5.4m x 3.6m	Additional unit	£2300	£115	£3000	£115	£4400	£160
Corner Hay Barn Open fronted, <i>Elite Range includes 1pair of double doors.</i>							
5.4m x 3.6m	Additional unit	£2000	£115	£2700	£115	£4400	£160
7.2m x 3.6m	Additional unit	£2600	£200	£3300	£200	£5300	£240
Corner Unit Tack Room Partition Including Tack Room Door.	Additional unit	£400	£40	£450	£40	£900	£50
Tack/Feed Room.							
1.8m x 3.6m	Additional unit	£1000	£85	£1200	£85	£2400	£90
2.4m x 3.6m	Additional unit	£1200	£90	£1400	£90	£2700	£100
3.6m x 3.6m	Additional unit	£1400	£100	£1700	£100	£3000	£120
Hay Barn Open fronted, <i>Elite Range includes 1pair of double doors.</i>							
3.6m x 3.6m	Additional unit	£1100	£100	£1500	£100	£3200	£120
5.4m x 3.6m	Additional unit	£1800	£115	£2400	£115	£4100	£160
7.2m x 3.6m	Additional unit	£2200	£200	£3000	£200	£5100	£240
Covered Walkway.							
2.4m x 3.6m	Additional unit	-	-	£1300	£90	£2200	£100
3.0m x 3.6m	Additional unit	-	-	£1400	£95	£2400	£110
3.6m x 3.6m	Additional unit	-	-	£1500	£100	£2600	£120
Wash Area we recomend EVA wall lining mats are included to protect the walls from water sprayat an additional cost of £700 .							
3.6m x 3.6m	Additional unit	-	-	£1500	£100	£2400	£120
Ride Through Archway.							
3.6m x 4.8m	Additional unit	-	-	£3200	£100	£4200	£120

What is a Plinth? Our unique Plinth System, consisting of a galvanised steel plinth and a quality damp proof course, will protect the bottom of your new building. We advise against brick plinths as these become damp, move and crumble especially at the doorways. It is important to ensure the concrete is the correct size, therefore a base plan will be sent to you upon confirmation of order.

Delivery and Construction We are pleased to offer Free Delivery and Construction within a 50mile radius of our workshop in Netherstreet, Chippenham, Wiltshire. Additional mileage is chargeable. All Construction is carried out by our fully trained staff rather than subcontractors. All Sections bolted together for added strength.

Tack Room Security Pack Unfortunately in this day and age, everyone has concerns about security. We offer our hugely popular Security pack, which features a five lever mortice lock, security bolted hinges, internally enclosed trusses and a fully framed ledge and braced door backed with galvanised steel (not required for Elite Range) and mounted in its own frame. Intro and Ideal Range £395 **Included with the Elite Range.**

Translucent Roof Sheet Add additional light with our sun reflective translucent roof sheets that will assist with clipping and other intricate jobs. Intro Range £35 Ideal Range £55 **Elite Range Included.**

Stable Anti Cribbing Pack Full height kickboards and top door lined. Top door anti bite strips which include, steel lining to door stop, top door opening and leading edge of the top door. Bottom door anti bite strip extending 450mm to the front. Intro and Ideal Range £300 **Included with the Elite Range.**

Clock Tower All our towers feature fluted pillars and louvred sides. Dials can be fitted on as many sides as required. The roof and finial is moulded from a lead original in GRP composite using metal powder to simulate lead whilst reducing weight and cost. Roman or Skeleton dial designs (with optional illumination) can be specified, and the tower can also include digital bell chimes or real bronze bells. £2500 each.

All prices are plus VAT at the current rate

sales@j-w-s.co.uk

Call Us Now 01380 850965



Equestrian Optional Features

Intro Ideal Elite

Roof

Sun reflective translucent roof sheet each.	£35	£55	Included
Smart Ply OSB3 lined roof per M2.	£11	Included	Included
Metal box profile sheets laid over 11mm Smart Ply OSB3 lining and membrane £150 plus per M2.	£17	£7	£7
Cemix roofing in grey colour options available £250 plus per M2.	-	£10	£10
Coloured Onduline, red, green or brown per M2.	£7	£7	£7
Felt Shingle Roofing includes upgrade to 22.5 degree roof pitch per M2.	-	£45	£45
Bronzed Polycarbonate Roofing to create sky light in felt shingle roofing.	-	POA	POA
Western red Cedar shingles & shakes M2.	-	£90	£90
Light weight tile effect metal roofing.	-	POA	POA
Synthetic slate tiles.	-	POA	POA
Rear guttering including down pipes per meter.	£15	£15	Included
Fibre Glass Clock Tower including face, re-synchroniser and weathervane.	-	£2500	£2500

Canopy

Arbour including vent between front section and underside of roof.	£40	Included	Included
2.0m Canopy with softwood 150mm decorative posts & curved braces per meter.	-	£120	£140
2.6m Canopy with softwood 150mm decorative posts & curved braces per meter.	-	£150	£185
Canopies above in Oak add £200 plus per unit.	-	£175	£200
Staddle Stones cut from Bath Stone each.	-	£100	£100
Shiplap lining to 1.2m canopy per meter <i>(with this option you will block the Arbour Vent).</i>	-	£25	£30
Shiplap lining to 2.0m canopy per meter.	-	£45	£50
Shiplap lining to 2.6m canopy per meter.	-	£55	£60

Doors

Intro Range Softwood Top door	£100	-	-
Top rear door Softwood including anti bite strips <i>(free option with Elite American Barns).</i>	-	£200	£200
Top rear door Hardwood and steel including steel frame anti bite strips.	-	-	£400
Top door opening anti bite strips.	£85	£85	-
Full door opening anti bite strips.	-	£140	Included
Extended bottom door anti bite strip.	£45	£45	£45
Softwood Hay Barn double doors 2.4m wide.	£350	£350	-
Galvanised steel and hardwood Hay Barn doors 2.4m wide.	-	-	Included

Windows

Intro Range Hopper window with heavy duty bars for protection.	£80	-	-
4 Blade louvre window fitted to rear wall.	-	£200	-
6 Blade louvre window fitted to rear wall <i>(free option with Elite American Barn).</i>	-	-	£225

Kickboards, Lining & EVA wall protection

Smart Ply OSB3 kickboards to eaves per 3.6m stable <i>(11mm Intro Range 18mm Ideal & Elite Range).</i>	£160	£180	Included
12mm ply kickboards to 1.2m per 3.6m stable.	£110	-	-
18mm ply kickboards to 1.2m per 3.6m stable.	-	£110	-
12mm ply kickboards to eaves per 3.6m stable.	£260	-	-
18mm ply kickboards to eaves per 3.6m stable.	-	£260	£170
Full lining to Tack Room and Hay Barns.	-	POA	Included
Tack Room ceiling per M2.	-	POA	POA
EVA wall mats fixed over Kickboards to 1.2m per 3.6m stable.	£330	£330	£330
EVA wall mats fixed over Kickboards to eaves per 3.6m stable (includes full height kickboards).	£820	£840	£660

Talk Bars

1.2m wide Galvanised steel frames with 20mm bars.	£175	£175	£175
---	------	------	------

Rubber Floor Mats

1.2m x 1.8m x 17mm Rubber Mats 25kg, fitted when delivered with building.	£45	£45	£45
1.14m x 0.81m x 45mm Mud Buster Ground Stabilisation Mats, fitted when delivered with building.	£30	£30	£30

Mobile Buildings (in addition to the items above)

4no Ground Anchors.	£85	£85	£85
Galvanised Steel Gate to front including Stockbord covering for safety.	£220	£220	£200
Galvanised Steel Partition Gate including Stockbord covering for safety.	£250	£250	£250
Stable conversion kit (bottom door only).	£300	-	-
Stable Conversion Kit including top and bottom door and fixed window.	-	£400	£800
Partition with galvanised sledge beam under.	£250	£250	£500
Partition with Tack Room door and galvanised sledge beam under.	£425	£450	£1000
2no Slide Rails.	£75	£75	£75

All prices are plus VAT at the current rate

sales@j-w-s.co.uk

Call Us Now 01380 850965

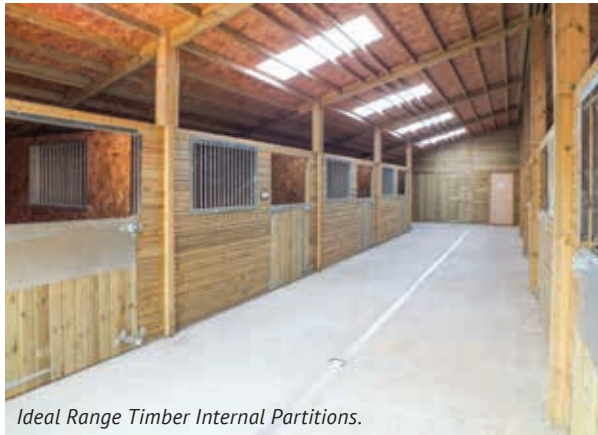
American Barns

Beginning in 1987 we were one of the first companies in the UK to manufacture American barns. Now, 25 years on, we are firmly established as one of the leading suppliers of these large and highly versatile buildings.

There are many situations when a Jon William Stables American barn could be the right choice for you. They are perfect for an exposed site, providing the ultimate protection from the elements. Offering great flexibility internally, it is possible to create loose boxes, tack room

areas and hay storage. Fitted rear doors allow for greater ventilation and gives your horse an alternative outlook.

Many design options are available – the choice is entirely yours.



Ideal Range Timber Internal Partitions.



Ideal Range Galvanised Steel Internal Partitions.



Elite Range Victorian Style Galvanised Steel Internal Partitions.



Ideal Range American Barn.



Elite Range American Barn.

Ideal Range American Barns

Achieving a traditional country barn appearance, our Ideal range American barns offer an affordable option to a stable yard layout, allowing the additional advantage of having everything under one roof.

Featuring a lined Onduline roof that provides a cooler environment in the summer and warmth in the winter months.

We offer the option of softwood timber internal sections or galvanised steel with softwood inserts, each with side hung bottom doors.



Ideal Range Top Rear Doors.

SOFTWOOD TOP REAR DOORS Adding top stable doors to the back of your building is a superb way to increase air flow. To protect your building further we include anti-bite strips around the top door opening.



American Barn, Optional Feature Top Rear Doors, Sliding Door and Cedar Shingle Roofing.



Traditional Stable Fronts.



Shetland Two Way Split Door.



Tack Room.

*American Barn, Optional Feature Top
Rear Doors and Translucent Roof Sheets.*



*American Barn, Optional Feature Translucent
Roof Sheets, Top Rear Doors.*

"We had an American Barn, six 12 x 12s and two 18 x 12s. The service was excellent, the team came when they said, it was very well made and on the whole a very good barn with plenty of daylight. The horses love it, and we would recommend Jon William Stables to anybody!"

The Tyson's. World class endurance riders. Somerset.



*American Barn, Optional Feature Sliding
Door and Extended Canopy.*

TRANSLUCENT ROOF SHEETS A cost-effective method of adding additional light, Onduline's sun reflective translucent roof sheets will assist with clipping and other intricate jobs.

FEATURES

- 2.135m (7') eaves height.
- 75mm x 50mm (3" x 2") framework. Double uprights on all doorways.
- 16mm shiplap cladding.
- Pressure treated timber internally and externally.
- 18mm (¾") kickboards.
- Black Onduline roofing lined with 11mm (½") OSB.
- Guttering including down pipes to both sides.
- One pair of 2.4m (8') side hung entrance doors.
- Fully adjustable strap hinges.
- Our unique plinth system.

Elite Range American Barns

Elite range American barns are our prestige range offering our highest specification all under one roof for the comfort and more efficient use for yourself and your horses.

With its larger framework and additional height, side canopies and sliding entrance doors we have provided both convenient use and robust build. Together with our Victorian style internal sections with hardwood inserts, you will find our building specification provides an ornate finish. Ventilation is provided by louvre windows to the rear of each stable and gable end ventilators.



American Barn, Optional Feature Top and Bottom Doors and Cedar Shingle Roofing.

SHINGLE ROOFING Add the ultimate finishing touch to your building. A felt or cedar shingle roof with a choice of designs and colours. Along with the shingles we will fit two timber louvres to each gable for additional ventilation.



American Barn Incorporating Loose Boxes, Hot Box, Wash Box and Tackroom, Optional Feature Felt Shingle Roofing and 3.6m Front Canopy.



Polycarbonate Roofing.



Elite Range American Barn.



Victorian Style Internal Stabling



Victorian Style Internal Stabling with Recycled Kickboard Inserts.



"thanks for all your efforts in supplying our barn, we are really thrilled with the final results. I don't think things could have gone any smoother.

I have included some photographs which I hope might be of use to you.

Again many thanks,"

Phil and Carolyn, Leicester.



Elite Range Six Blade Louvre Windows.



ULTIMATE KICKBOARDS Our Ultimate kickboards consists of the same 33mm kickboards inserts and galvanised steel frames as used for the internal steel partitions. The steel frames are fitted to the outer timber walls of your building along with the kickboard inserts. We also fit hardwood ply to the eaves' height as standard, as shown below. This makes our Elite Range American Barns one of the strongest and most aesthetically pleasing timber American Barns on the market today.



Optional Feature External Sliding Doors.



Optional Feature Ultimate Kickboards.



Traditional Internal Stabling.



Wash Areas separated with Half Height Partition.



Victorian Style Fronts with Govaplast recycled kickboards.



Wash Box.

"Just to say thank you for the great service we received from start to finish. The guys who put the building together were very polite , clean and tidy and were a pleasure to deal with"

Nicky & Pete.



American Barn .
Optional Feature Top & Bottom Rear Doors.



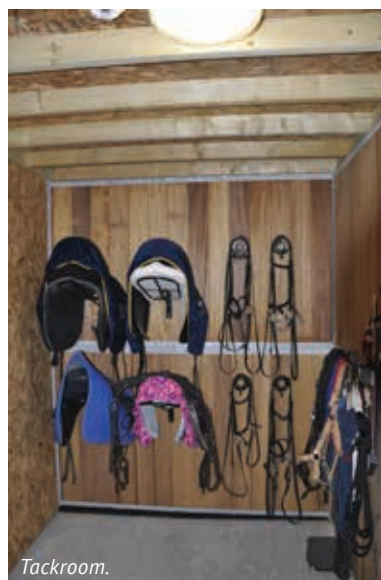
Top Rear Door and Window Combination.

*American Barn Incorporating Loose Boxes, Wash Box and Tackroom.
Sliding Door Positioned to side.*



"We are both very pleased with Jon William Stables and the professional service and efficient operation from beginning to end. Please pass on our thanks to everyone involved for a team effort which is a credit to your organisation. With best wishes for the future."

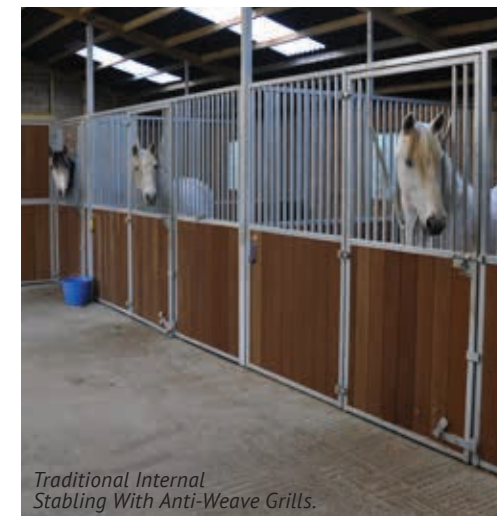
Geoffrey & Carolyn Groome,
Northants.



Tackroom.



American Barn Interior.



*Traditional Internal
Stabling With Anti-Weave Grills.*

FEATURES

- Steel framed internal sections with hardwood or softwood inserts.
- 2.480m (8') eaves height.
- 100mm x 50mm (4" x 2") framework. Double uprights on all doorways.
- 19mm shi lap cladding.
- Pressure treated timber internally and externally.
- 18mm (¾") Full height kickboards.
- Black Onduline roofing lined with 11mm (½") OSB.
- 550mm (22") side canopies.
- Guttering including down pipes.
- One six blade louvre window is supplied per stable.
- Four gable end louvre vents.
- Sliding entrance doors.
- Our unique plinth system.



American Barns

Ideal

Ideal +

Internal Units 3.6m x 3.6m.
4no Loose Boxes.
6no Loose Boxes.
8no Loose Boxes.
10no Loose Boxes.
2no Loose Boxes Additional.

Barn Size
7.2m x 10.8m
10.8m x 10.8m
14.4m x 10.8m
18.0m x 10.8m
3.6m x 10.8m

Timber Internal partitioning
18mm Kickboards
£12000
£17000
£22000
£28000
£5000

Steel Internal partitioning
33mm Softwood Kickboards
£14000
£20000
£26000
£32000
£6000

Plinth
£400
£600
£800
£1000
£200

Prices are for stabling only, we offer a vast range of internal layouts some of which are shown lower down. Please call our sales team to discuss your requirements on 01380 850965 or email sales@j-w-s.co.uk

Elite

Elite +

Barn Size
7.2m x 10.8m
10.8m x 10.8m
14.4m x 10.8m
18.0m x 10.8m
3.6m x 10.8m

Internal Units 3.6m x 3.6m.
4no Loose Boxes.
6no Loose Boxes.
8no Loose Boxes.
10no Loose Boxes.
2no Loose Boxes Additional.

Traditional steel or Victorian steel internal partitioning.
33mm Softwood Kickboards
£22000
£29250
£36500
£43250
£7250

Steel Internal partitioning
33mm Iroko Hardwood or Recycled Kickboards
£25500
£34500
£43500
£52500
£9000

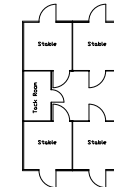
Plinth
£480
£720
£960
£1200
£240

Example Pricing.

Barn Size 7.2m x 10.8m.

4no 3.6m x 3.6m Loose Boxes.
1no 3.6m x 2.1m Tack Room front.
6no Translucent roof sheets.
4no Softwood top rear doors.
1no 2.1m x 3.6m Tack Room Ceilings.
Unique Plinth System.

	Ideal	Ideal +	Elite	Elite +
	£12000	£14000	£22000	£25500
	£400	£700	£800	£1100
	£330	£330	Inc	Inc
	£800	£800	Inc	Inc
	£220	£220	£220	£220
	£400	£400	£480	£480
Total	£14250	£16450	£23500	£27300

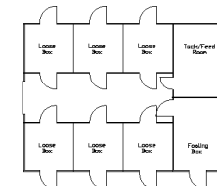


Example Pricing.

Barn Size 14.4m x 10.8m.

6no 3.6m x 3.6m Loose Boxes.
1no 3.6m x 5.4m Foaling Box.
1no 3.6m x 5.4m Tack/Feed Room.
10no Translucent roof sheets.
7no Softwood top rear doors.
1no 3.6m x 5.4m Tack Room Ceilings.
External door to Tack/Feed Room.
Unique Plinth System.

	Ideal	Ideal +	Elite	Elite +
	£22000	£26000	£36500	£43500
	£550	£550	Inc	Inc
	£1400	£1400	Inc	Inc
	£600	£600	£600	£600
	£350	£350	£1000	£1000
	£800	£800	£960	£960
Total	£25700	£27700	£39060	£46060

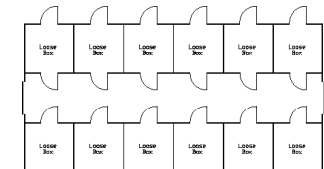


Example Pricing.

Barn Size 21.6m x 10.8m.

12no 3.6m x 3.6m Loose Boxes.
18no Translucent roof sheets.
6no Louvre Windows.
6no Softwood top rear doors.
1no Additional access door.
Unique Plinth System.

	Ideal	Ideal +	Elite	Elite +
	£33000	£38000	£50500	£61500
	£990	£990	Inc	Inc
	£1200	£1200	Inc	Inc
	£1200	£1200	Inc	Inc
	£400	£400	£1000	£1000
	£1200	£1200	£1440	£1440
Total	£37990	£42990	£52940	£63940



What is a Plinth? Our unique Plinth System, consisting of a galvanised steel plinth and a quality damp proof course, will protect the bottom of your new building. We advise against brick plinths as these become damp, move and crumble especially at the doorways. It is important to ensure the concrete is the correct size, therefore a base plan will be sent to you upon confirmation of order.

Delivery and Construction We are pleased to offer Free Delivery and Construction within a 50mile radius of our workshop in Netherstreet, Chippenham, Wiltshire. Additional mileage is chargeable. All Construction is carried out by our fully trained staff rather than subcontractors. All Sections bolted together for added strength.

Ultimate Kickboards Our Ultimate kickboards consists of the same 33mm kickboards inserts and galvanised steel frames as used for the internal steel partitions. The steel frames are fitted to the outer timber walls of your building along with the kickboard inserts. We also fit hardwood ply to the eaves' height as standard, as shown below. This makes our Elite Range American Barns one of the strongest and most aesthetically pleasing timber American Barns on the market today.

All prices are plus VAT at the current rate

sales@j-w-s.co.uk

Call Us Now 01380 850965

Mobile Buildings

If you do not own the paddocks on which your horses are kept, or if you experience difficulties obtaining planning permission for a permanent structure – or you just can't wait to home your horse, our mobile buildings provide the perfect solution.

We have been manufacturing mobile buildings since 2001. We began after careful consideration of the marketplace

to ensure we created a stronger and more robust unit than is generally available.

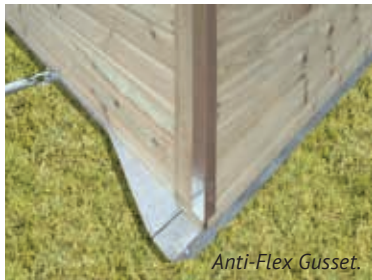
The significant difference of the Jon William Stables mobile building is in the important feature of the sledge supplied. That is, we designed and built the sledge to take all the stress. Sledges are made from heavy duty galvanised steel and featuring anti-flex gussets fitted to

the outside corners preventing flex when towing. We fit towing points and anchoring points to both ends, so it is both easier to move and secure to the ground.

Importantly we supply solid tow bars that can be used at either end of the building, rather than chains or straps, which eliminates the risk of damage to your towing vehicle.



Tow Bar Linkage.



Anti-Flex Gusset.



Tow Bars.



Anti Bite Strips and Rubber Mats.

Long Life Galvanised Steel Sledge A standard hot dip galvanized coating on fabricated steelwork, i.e. building frame, gate or appliance, gives a typical life without maintenance of 50+ years in a rural environment. A paint coating could need remedial work three or four times before the galvanizing needs any attention.

"Jon William Stables was an obvious choice for Clayton and I when we were seeking a substantial field shelter and additional stables at the yard. With all the hallmarks of top quality craftsmanship we have found their products to be of the highest standard and their customer service is also brilliant."
Lucinda Fredericks

Intro Range Mobile Stables & Shelters

We were one of the first companies in the UK to develop mobile equestrian buildings.

Our Intro range mobile buildings provide a robust unit manufactured using high quality materials without some of the standard features found in the Ideal Range.

The range provides a starting point for your mobile shelters and stabling needs at an affordable price. Providing peace of mind for years to come.



Stable Conversion Kits.

STABLE CONVERSION KIT Convert your shelter into a stable with the addition of this removable panel, which comprises a top and bottom door and fixed window. Offering greater flexibility to your mobile shelter.



Two 3.6m x 3.6m Mobile Loose Boxes, Optional Features Translucent Roof Sheets.



3.0m x 7.2m Mobile Shelter, Optional Features Slide Rails and Stable Conversion Kits.



Stable Conversion Kit and Anti-Bite Strips.



3.6m x 3.6m Mobile Loose Box.



Mobile Shelter 3.0m x 6.0m, Optional Features Anti Bite Strips and Full Height Kickboards.

"Thrilled with our recently acquired mobile stable for our donkeys. Service was excellent from start to finish. The donkeys are thrilled with their new home. Would like to highly recommend your professional company. You were a pleasure to deal with."

Roland and Rodney (donkeys) and staff at Nunnington.



Mobile Loose Boxes and Tackrooms.



Mobile Shelter 3.6m x 5.4m, Optional Feature Internal Tackroom Partition.

MOBILE TACK ROOM PARTITION Supplied with a galvanised steel cross beam to protect the bottom of the section, a tack room partition enables a storage area to be created within our mobile shelters.

FEATURES

- Galvanised box section steel sledge under all walls.
- Tow bars with towing points at both ends.
- External anti-flex gussets.
- 2.180m (7") eaves height.
- 75mm x 50mm (3" x 2") framework.
- 16mm shiplap cladding.
- Pressure treated timber internally and externally.
- 11mm (½") kickboards.
- 0.9m (3') front canopy.
- Black Onduline roofing.
- Front guttering including down pipes at both ends.

STABLES

- Bottom stable door.

Ideal Range Mobile Stables and Shelters

Unlike many of our competitors our Ideal range mobile units offer additional features not usually associated with moveable buildings. We offer a larger overhang, and the added benefit of a lined Onduline roof for additional strength and longevity.

As with our static stables the mobile stable units feature our unique arbour vents and opening windows. The range comes complete with top and bottom stable doors and importantly, incorporates our galvanised steel sledge underneath the middle partition giving you complete building protection.



Optional Feature Boarded Gates and Anti-Bite Strips.

STABLE ANTI-CRIB PACK Full height kickboards and top door lined. Top door anti-bite strips which include steel lining to door stop, top door opening and leading edge of the top door. Bottom door anti-bite strip extending 450mm to the front.



Two 3.6m x 3.6m Loose Boxes, one 3.6m x 1.8m Tackroom, Optional Feature Top Door and Extended Bottom Door Anti Bite Strips.



Optional Feature Stable Conversion Kit, Double Doors and Anti-Bite Strips.



Six 3.6m x 3.6m Loose Boxes Optional Feature Anti-Crib Packs.



Mobile Shelter 3.6m x 10.8m including 3.6m x 3.6m Tackroom, Optional Feature Boarded Gates.

*"Bottoms Up"
Mobile Shelter 3.6m x 7.2m, Optional Feature Anti-Bite Strips.*



"Our enquiry was dealt with efficiently and Jon William Stables were able to make a prompt delivery even over the Christmas period.

Many thanks for the prompt service"

Mr Beale.

Mobile Shelter 3.6m x 3.6m, Optional Feature Anti-Bite Strips and Rubber Mats.



*Two 3.6m x 3.6m Loose Boxes,
Optional Feature Box Profile Roofing.*

FEATURES

- Galvanised box section steel sledge under all walls.
- Tow bars with towing points at both ends.
- External anti flex gussets.
- 2.180m (7") eaves height.
- 75mm x 50mm (3" x 2") framework. Double uprights on all doorways.
- 16mm shiplap cladding.
- Pressure treated timber internally and externally.
- 18mm (¾") kickboards.
- 1.2m (4") front canopy.
- Black Onduline roofing lined with 11mm (½") OSB.
- Front guttering including down pipes at both ends.

STABLES

- The same specifications as Ideal Range Stables.

Elite Mobile Stables and Shelters

Due to demand we have added our Elite Range of stables to our Mobile building portfolio. For full specifications please see our Elite Range Stables pages.

These buildings are of the highest specification but also probably the heaviest on the market today, you will require a large four wheel drive tractor to move them as each stable weighs more than 1300KG

"I asked around and researched to find the best value and quality stables available and the name of Jon William Stables was clearly at the top.

I was delighted with my dealings with Jon William Stables from the first phone call, right through to the four staff who finished assembly within a week. Although my horses are mostly turned out it's great to have an area we can bring them to that is not only great for them but is also smashing to view outside my kitchen window!

Kelly Marks, Intelligent Horsemanship.



*Bespoke Elite Range Mobile Stabling commissioned by Kelly Marks
Four 3.6m x 3.6m Loose Boxes one 3.6m x 2.4m Tackroom,
Optional Feature Felt Shingle Roofing.*



*Elite Range Loose Boxes,
Shelter and Tack Room.*



*Two 3.6m x 3.6m Loose Boxes
one 3.6m x 2.4m Tack Room.*

"I am writing to thank you and your staff for the way you processed my order for a mobile field shelter. From my visit to your premises to the final check of the building, it was all done with efficiency and courtesy. The men who erected the shelter had a few problems but they persevered with good humour. Please pass on my thanks to them. I would recommend your company any time!"

Hilary Westgarth.



Mobile Buildings

Field Shelters

The units below include 1no 2.4m opening.

3.6m x 3.0m

3.6m x 3.6m

The units below include 1no 2.4m opening off set to one side.

5.4m x 3.0m

5.4m x 3.6m

The units below include 2no 1.9m openings.

6.0m x 3.0m

6.0m x 3.6m

The units below include 2no 2.4m openings.

7.2m x 3.0m

7.2m x 3.6m

The units below include 3no 1.9m openings.

9.0m x 3.0m

9.0m x 3.6m

The units below include 3no 1.9m openings.

10.8m x 3.0m

10.8m x 3.6m

You may decide to protect your building further with **Anti Bite Strips** fitted around the opening and to the four external corners of the building **Included on the Elite Range.**

Intro Ideal Elite

Anti
Bite
Strips

18mm
Rubber
Mats

£2100	£2500	£3500	£100	£225
£2200	£2600	£3600	£100	£270
£2800	£3300	£4700	£100	£340
£2900	£3400	£4800	£100	£405
£3000	£3500	£5200	£150	£375
£3100	£3600	£5300	£150	£450
£3200	£3800	£5900	£150	£450
£3300	£3900	£6000	£150	£540
£4100	£4900	£7100	£200	£560
£4200	£5000	£7200	£200	£675
£4400	£5400	£8300	£200	£675
£4500	£5500	£8400	£200	£810

Field Shelters & Tack Rooms

1no 3.6m x 3.6m Shelter, 1no 3.6m x 1.8m Tack Room.

1no 3.6m x 3.6m Shelter, 1no 3.6m x 2.4m Tack Room.

1no 7.2m x 3.6m Shelter, 1no 3.6m x 1.8m Tack Room.

1no 7.2m x 3.6m Shelter, 1no 3.6m x 2.4m Tack Room.

Sledge Size

5.4m x 3.6m

6.0m x 3.6m

9.0m x 3.6m

9.6m x 3.6m

Intro Ideal Elite

Anti
Bite
Strips

18mm
Rubber
Mats

£3300	£3800	£6200	£100	£405
£3500	£4000	£6500	£100	£450
£4500	£5400	£8400	£150	£675
£4700	£5600	£8700	£150	£720

Stables

1no 3.6m x 3.6m Loose Box.

2no 3.6m x 3.6m Loose Boxes.

3no 3.6m x 3.6m Loose Boxes.

Sledge Size

3.6m x 3.6m

7.2m x 3.6m

10.8m x 3.6m

Intro Ideal Elite

£2500	£3000	£4400	£270
£4300	£5300	£7900	£540
£6100	£7600	£11400	£810

Stables & Tack Rooms

1no 3.6m x 3.6m Loose Box, 1no 3.6m x 1.8m Tack Room.

1no 3.6m x 3.6m Loose Box, 1no 3.6m x 2.4m Tack Room.

2no 3.6m x 3.6m Loose Boxes, 1no 3.6m x 1.8m Tack Room.

2no 3.6m x 3.6m Loose Boxes, 1no 3.6m x 2.4m Tack Room.

Sledge Size

5.4m x 3.6m

6.0m x 3.6m

9.0m x 3.6m

9.6m x 3.6m

Intro Ideal Elite

£3700	£4400	£7000	£405
£3900	£4600	£7200	£450
£5500	£6700	£10500	£675
£5700	£6900	£10700	£720

Stables & Field Shelters

1no 3.6m x 3.6m Loose Box, 1no 3.6m x 3.6m Hay Barn.

2no 3.6m x 3.6m Loose Boxes, 1no 3.6m x 3.6m Hay Barn.

Sledge Size

7.2m x 3.6m

10.8m x 3.6m

Intro Ideal Elite

£3900	£4800	£7200	£100	£540
£5700	£7100	£10700	£150	£810

Delivery and Construction We are pleased to offer Free Delivery and Construction within a 50mile radius of our workshop in Netherstreet, Chippenham, Wiltshire. Additional mileage is chargeable. All Construction is carried out by our fully trained staff rather than subcontractors. All Sections bolted together for added strength.

Stable Anti Cribbing Pack Full height kickboards and top door lined. Top door anti bite strips which include, steel lining to door stop, top door opening and leading edge of the top door. Bottom door anti bite strip extending 450mm to the front. Intro and Ideal Range £300 **Included with the Elite Range.**

Tack Room Security Pack Unfortunately in this day and age, everyone has concerns about security. We offer our hugely popular Security pack, which features a five lever mortice lock, security bolted hinges, internally enclosed trusses and a fully framed ledge and braced door backed with galvanised steel (not required for Elite Range) and mounted in its own frame. Intro and Ideal Range £395 **Included with the Elite Range.**

All prices are plus VAT at the current rate

sales@j-w-s.co.uk

Call Us Now 01380 850965

Garaging and Workshops

Our timber-based business has evolved over the years beginning with utility buildings in 1965 and subsequently expanding into our current full range of buildings.

Consequently, we have the experience to design and manufacture either a standard design or one that is

completely bespoke, using the knowledge and expertise we have to complete your project.

Constructed using the same techniques and quality of timber as timber framed houses, our workshops, garages and carriage houses attain a very high standard finish.

Examples of bespoke structures we have provided include machinery stores, carports, carriage houses, home offices, playrooms and swimming pool rooms every one is different.



*Ideal Range Carriage House 10.2m wide x 5.4m deep.
Optional Feature Felt Shingle Roofing, Dormer Gable,
Oak Detailing and Double Doors.*



*Elite Range Carriage House 6.0m wide x 6.0m deep
Optional Feature Felt Shingle Roofing, Oak Detailing and Double Doors.*

Ideal Range Garages, Carriage Houses and Workshops

The Ideal range offers high specification at exceptional value making it one of our most popular products.

Constructed with traditional features the buildings offer an attractive, practical and robust design.

Garage and Trailer Store 10.8m x 5.4m.



PLINTH SYSTEM A solid platform upon which to build is essential, and we strongly recommend that you start with a concrete base. This will enable us to fit our unique plinth system consisting of a galvanised steel plinth and a quality damp proof course which will protect the bottom of your new building. We advise against brickwork as our clients have had problems with buildings moving and bricks becoming loose especially on the doorways.

*Five Bay 18.0m x 5.4m Carriage House,
Optional Feature Joinery Double Doors, Joinery Windows and Oak Posts.*



*Two Bay 7.2m x 5.4m Ideal Range Carriage House,
Optional Feature Double Doors and Felt Shingle Roofing.*



Bespoke Bar and Alfresco Dining Area.



*3.0m Garage with
Optional Feature Felt Shingle Roofing*



*Garage 3.6m x 5.4m, Optional Feature
Joinery Windows and Felt Shingle Roofing.*



Three Bay 9.0m x 5.4m Carriage House.

*"Thank you so much, from beginning to end,
a pleasure to deal with your company, would
certainly use you again and recommend you
to others."*

Mrs Jefferson-Mackney, Gloucester.



*Ideal Range Carriage House 6.0m wide x 5.4m deep.
Optional Feature Featheredge Cladding, Additional Height,
Felt Shingle Roofing, Oak Detailing and Double Doors.*



FEATHEREDGE CLADDING Supplied in Tanalith treated softwood as standard our featheredge will give you the ultimate Heritage feel, also available in British Western red cedar or Green Oak at additional cost.



*Ideal Range Carriage House.
Including Internal Stables,
Tractor Store and Double Garage.*





"...thank you a difficult job exceedingly well done under difficult circumstances and best of all finished off well ..."

Richard Newman,
Wiltshire.



TRANSLUCENT ROOF SHEET Add additional light with our sun reflective translucent roof sheets.

FEATURES

- 2.135m (7") eaves height.
- 75mm x 50mm (3" x 2") framework.
Double uprights on all doorways.
- 16mm shiplap cladding.
- Pressure treated timber internally and externally.
- Wall membrane.
- 11mm (½") OSB lining to eaves if the footprint exceeds 35m² or as an optional extra.
- Black Onduline roofing lined with 11mm (½") OSB.
- Guttering to both sides including down pipes.
- Side hung entrance doors.
- Fully adjustable strap hinges.
- Our unique plinth system.

Elite Range Garages, Carriage Houses and Workshops

Whether you require housing for a vintage car or simply require extra storage space, our Elite range garages and carriage houses offer a prestigious, time honoured addition to your property.

Decorative posts, curved bracing and roofing materials to complement the surroundings finish the traditional build.



OAK FAÇADE Create an English Heritage appearance with our optional feature oak façade. Fascia's, posts and curved braces shaped from English oak.

*Carriage House 7.2m x 6.0m.
Optional Feature Felt Shingle Roofing,
Clock Tower and Automatic Opening Doors.*



*Carriage House and Stables.
Optional Feature Felt Shingle Roofing with full Barn Hips.*



Bespoke Oak Garage

"Thank you so much, from beginning to end, a pleasure to deal with your company, would certainly use you again and recommend you to others."

Mrs Jefferson-Mackney,
Gloucester.



*Carriage House.
Optional Feature Double Doors, Cedar Shingle
Roofing, and Dormer Gable.*

CEDAR SHINGLES (shown below) Our range of Western red Cedar shingles & shakes add distinction to buildings across the UK. Shingles give a rich warm red colour, in time the natural effect of aging weathers this to an attractive silvery grey. Red Cedar contains a natural preservative which makes the wood durable in its natural state.



FELT SHINGLES (shown below) We use, in all of our felt shingle roofing, SBS elastomer bitumen, which lasts twice as long as an ordinary bitumen roof. It is not disturbed by the extreme weather of the north. The material, being Finnish and durable, is flexible, even during the summer days when the roof may be 80 degrees hot, or upto -35 during winter nights. We can readily offer a guarantee of 15 years for such a roof.

*Carriage House 7.2m x 6.0m. Optional Feature Felt Shingle
Roofing, Featheredge Cladding, Personal Door,
Double Doors and Oak Detail.*



SYNTHETIC SLATE (shown below) For centuries, slate roofing has been desired for its durability and beauty. With authentic surfaces and edges, TapcoSlate highlights the handsome character of slate, at the same time enhancing roof performance through innovative design. Unlike natural slate, TapcoSlate won't break or de-laminate and comes with a 40-year Warranty.



METAL SHEETS (shown right) We offer a comprehensive range of profiled metal sheets and rooflights that are an ideal choice for the roofing and cladding of agricultural, domestic, commercial and industrial buildings. All of our profiled sheeting and purling products have been independently tested to current CE EN 14782 requirements.





Bespoke Race Workshop, Garaging and Attic.



"This new venture has been made possible with a new bespoke workshop garage built by Jon Williams Stables. In comfort I can prepare the car ready for racing in a clean, spacious and temperate regulated environment."

Robin Langford, Leicester.



L-Shaped Garaging,
Optional Feature Cedar Shingle Roofing.

"Great well engineered products that stand the test of time. JWS understand customer care and have a proactive attitude even if the stables have been insitu for 15 plus years. Great people to deal with and the product is good quality and lasts for years!"

David Palmer-Jeffery , Google



Bespoke Carriage House.

Elite Range Bespoke Pavillion Commissioned By Pewsey Parish Council.



"Building supplied to the University of Bath. This building provides storage, maintenance and support facilities for the British Bobsleigh, British Bob-Skeleton and British Modern Pentathlon programmes based at the University of Bath."

Bespoke Building Commissioned By Bath University.



3.6m x 7.2m Tractor Shed.



SHINGLE ROOFING Add the ultimate finishing touch to your building. A felt or cedar shingle roof with a choice of designs and colours. Along with the shingles we will fit two timber louvres to each gable for additional ventilation.

FEATURES

- 2.480m (8') eaves height.
- 100mm x 50mm (4" x 2") framework.
- 19mm shiplap cladding.
- Pressure treated timber internally and externally.
- Lining to eaves height with 12mm (½") five layer ply.
- Black Onduline roofing lined with 11mm (½") OSB.
- Guttering to both sides including down pipes.
- Steel framed hardwood doors with five lever mortice locks.
- Our unique plinth system.

Garages & Workshops

Maximum door clearance Ideal 1900mm Elite 2190mm.

Includes 1 pair of 2.1m double doors in the 3.0m **gable** end.
3.0m x 4.8m
3.0m x 5.4m
3.0m x 6.0m
3.0m x 7.2m

Includes 1 pair of 2.4m double doors in the 3.6m **gable** end.
3.6m x 4.8m
3.6m x 5.4m
3.6m x 6.0m
3.6m x 7.2m

Includes 2 pairs of 2.1m double doors in the 6.0m **eave** side.
6.0m x 5.4m
6.0m x 6.0m

Includes 2 pairs of 2.4m double doors in the 7.2m **eave** side.
7.2m x 5.4m
7.2m x 6.0m

Includes 3 pairs of 2.1m double doors in the 9.0m **eave** side.
9.0m x 5.4m
9.0m x 6.0m

Includes 3 pairs of 2.4m double doors in the 10.8m **eave** side.
10.8m x 5.4m
10.8m x 6.0m

Ideal

Plinth
£3400 £105
£3500 £110
£3800 £115
£4000 £125

Elite

Plinth
£4700 £140
£4900 £150
£5400 £160
£5800 £180

Featheredge Cladding

£240
£270
£300
£360

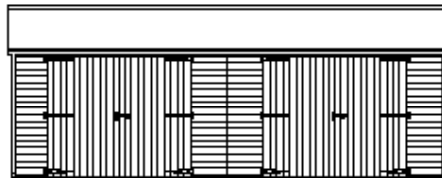
Felt Shingle Roofing

£725
£800
£900
£1075

GABLE



EAVES



Carriage Houses

2no 3.0m bays, openings in the 6.0m **eave** side.
6.0m x 5.4m
6.0m x 6.0m

2no 3.6m bays, openings in the 7.2m **eave** side.
7.2m x 5.4m
7.2m x 6.0m

3no 3.0m bays, openings in the 9.0m **eave** side.
9.0m x 5.4m
9.0m x 6.0m

3no 3.6m bays, openings in the 10.8m **eave** side.
10.8m x 5.4m
10.8m x 6.0m

Ideal

Plinth
£4700 £220
£5600 £230

Elite

Plinth
£6000 £300
£6600 £320

Featheredge Cladding

£350
£360

Felt Shingle Roofing

£1600
£1775

Oak Facade

£550
£550

What is a Plinth? Our unique Plinth System, consisting of a galvanised steel plinth and a quality damp proof course, will protect the bottom of your new building. We advise against brick plinths as these become damp, move and crumble especially at the doorways. It is important to ensure the concrete is the correct size, therefore a base plan will be sent to you upon confirmation of order.

Delivery and Construction We are pleased to offer Free Delivery and Construction within a 50mile radius of our workshop in Netherstreet, Chippenham, Wiltshire. Additional mileage is chargeable. All Construction is carried out by our fully trained staff rather than subcontractors. All Sections bolted together for added strength.

Oak Facade Create an English Heritage appearance with our optional feature oak façade. Fascia's, posts and curved braces shaped from English oak.

SHINGLE ROOFING Add the ultimate finishing touch to your building. A felt or cedar shingle roof with a choice of designs and colours. Along with the shingles we will fit two timber louvres to each gable for additional ventilation.

All prices are plus VAT at the current rate

sales@j-w-s.co.uk

Call Us Now 01380 850965

Garaging Optional Features

Ideal Elite

Roof

Sun reflective translucent roof sheet.

Metal box profile sheets laid over 11mm Smart Ply OSB3 lining and membrane £150 plus per M2.

Cemsix roofing in grey colour options available £250 plus per M2.

Coloured Onduline, red, green or brown per M2.

Felt Shingle Roofing includes upgrade to 22.5 degree roof pitch per M2.

Bronzed Polycarbonate Roofing to create sky light in felt shingle roofing.

Western red Cedar shingles M2.

Light weight tile effect metal roofing.

Synthetic slate tiles.

Fibre Glass Clock Tower including face, re-synchroniser and weathervane.

Barn hip ends *(not available with Onduline roofing)*.

Dormer Gable *(not available with Onduline roofing)*.

Cat slide roof *(not available with Onduline roofing)*.

£55

£7

£10

£7

£45

POA

£90

POA

POA

£2500

-

-

-

£55

£7

£10

£7

£45

POA

£90

POA

POA

£2500

-

-

-

Personal Doors

Softwood framed ledged and braced secured with a galvanised Brenton pad bolt and clad with shiplap each.

Security pack for the above door which features a five lever mortice lock, security bolted hinges & backed with galvanised steel plate each.

Galvanised steel and hardwood door secured with a 5 lever mortice lock per each.

Aluminium half glazed door, White, or Anthracite.

£150

£100

-

£1000

£150

£100

£550

£1000

Double Doors

Ideal Range 2.1m or 2.4m wide. Framed ledged and braced secured with a galvanised Brenton pad bolt and clad with shiplap per pair. To include front section to fit Carriage House apertures.

Security pack for the above door which features a five lever mortice lock, security bolted hinges & backed with galvanised steel plate per pair.

Galvanised steel and hardwood secured with 5 lever mortice lock per pair.

French Doors aluminium White or Anthracite.1800mm

Roller shutter doors (electrically operated) 2.1m from

Automated opening systems .

£500

-

£200

-

-

£1100

£1600

-

£1300

POA

-

-

-

£1100

£1600

£1300

POA

Windows

24mm double glazed UPVC windows in White or Anthracite Grey.

Casement 1050mm x 600mm.

Casement 1050mm x 1200mm (Anthracite Grey stock item)

Casement 1050mm x 1800mm

28mm double glazed aluminium windows White or Anthracite Grey.

Casement 1050mm x 600mm.

Casement 1050mm x 1200mm.

Casement 1050mm x 1800mm

£350

£450

£600

£450

£600

£800

£800

£350

£450

£600

£450

£600

£800

£800

Other Optional Features

Staddle Stones cut from Bath stone each *(carriage houses only)*

Floor, 18mm Smart Ply OSB3 laid over 75mm x 50mm framing @ 400mm centres M2.

Partition wall to create a secure area in a Carriage House, includes lining to ridge.

£100

£30

£350

£100

£30

£350

All prices are plus VAT at the current rate

sales@j-w-s.co.uk

Call Us Now 01380 850965

Intro Range Specifications

HEIGHT To the eaves is 2170mm including the plinth. Ridge heights vary due to roof pitch and building size.

TREATMENT Our preferred method is high pressure commonly known as tanalised or CCP. Non-toxic to animals.

FRAMEWORK We use 75mm x 50mm tanalised, C16/C24 strength graded planed timber at 610mm centres.

SHIPLAP CLADDING We only use 16mm 5th-grade Scandinavian redwood, fully tanalised for longevity and resistant to fungal decay and insect attack.

ONDULINE ROOFING Our standard offering is black Onduline laid over 100mm x 47mm purlings at 610mm centres with a minimum of 15° degree pitch.

FRONT CANOPY 0.9m Fully supported by a prefabricated plated truss.

GUTTERING Fitted to the front of all buildings as standard, we use half round black guttering and include the necessary down pipes. Rear guttering is also available.

KICKBOARDS 11mm All stables are lined to 1220mm high and include noggins to prevent objects dropping behind. As standard we use 11mm moisture resistant OSB manufactured to BS5669.

VENTILATION Continuous ridge and eave-vents.

RAINWATER SKIRT Made from highly durable uPVC, our rainwater skirt is fitted behind the external cladding and overhangs the plinth. This prevents any water ingress.

DAMP PROOF COURSE The DPC is fitted to the underside of all sole (bottom timber) plates.

FIXING TO BASE Two heavy duty anchor brackets are fitted to the uprights of each 3.6m wall. These are then bolted to the base using mechanical fixings.

BOTTOM STABLE DOORS Bottom doors are 1235mm wide with a height of 1220mm and 62mm thick. Lined with 11mm moisture resistant OSB manufactured to BS5669 and fitted with an anti-bite strip and kickover latch, hung with 450mm hinges fastened with 150mm Brenton pad bolts for additional strength, held open and secured with a cabin hook. All doors extend to ground level. All ironwork is fully galvanised for protection against the elements.

TACK ROOM DOORS Tack room doors are 900mm wide and 50mm thick. Hung with 450mm hinges fastened with 150mm Brenton pad bolts, held open and secured with a

cabin hook. All doors extend to ground level. All ironwork is fully galvanised for protection against the elements.

HAY BARN DOORS are 2400mm wide and 50mm thick and hung with 450mm hinges fastened with 150mm Brenton pad bolts, held open and secured with a cabin hook. All doors extend to ground level. All ironwork is fully galvanised for protection against the elements. They are not fitted as standard to the Intro range.

MOBILE BUILDINGS SLEDGE Fully galvanised steel sledge 80mm x 80mm x 5mm and 80mm x 40mm x 6mm box section under all walls. Anti-flex gussets are located at the corners externally for safety. There are two 50mm diameter galvanised steel tow bars that can be used from either end and are stronger and safer than straps or chains.



Ideal Range Specifications

HEIGHT To the eaves is 2170mm including the plinth. Ridge heights vary due to roof pitch and building size.

TREATMENT Our preferred method is high pressure commonly known as tanalised or CCP. Non-toxic to animals.

FRAMEWORK We use 75mm x 50mm tanalised, C16/C24 strength graded planed timber at 610mm centres. Double uprights on all doorways.

SHIPLAP CLADDING We only use 16mm 5th-grade Scandinavian redwood, fully tanalised for longevity and resistant to fungal decay and insect attack.

LINED ONDULINE ROOFING Our standard offering is black Onduline laid over 11mm moisture resistant OSB manufactured to BS5669 fixed to 120mm x 47mm purlings at 610mm centres with a minimum of 15° degree pitch.

FRONT CANOPY 1.2m Fully supported by a prefabricated plated truss.

GUTTERING Fitted to the front of all buildings as standard, we use half round black guttering and include the necessary down pipes. Rear guttering is also available.

KICKBOARDS 18mm All stables are lined to 1220mm. As standard we use 18mm moisture resistant OSB manufactured to BS5669. If you would prefer 12mm five layer ply in place of the OSB this can be fitted at no extra cost. Please inform our sales staff when placing your order.

VENTILATION We have created a unique arbour vent for our stables that is fitted under the overhang. Jon William Stables are market leaders in well-ventilated stabling, this makes the building not only better for your horse, but will make it last longer too.

RAINWATER SKIRT Made from highly durable uPVC, our rainwater skirt is fitted behind the external cladding and overhangs the plinth. This prevents any water ingress.

DAMP PROOF COURSE The DPC is fitted to the underside of all sole (bottom timber) plates.

FIXING TO BASE Two heavy duty anchor brackets are fitted to the uprights of each 3.6m wall. These are then bolted to the base using mechanical fixings.

WINDOWS Windows measure 600mm wide x 675mm high, our four blade louvre window are fitted with galvanised steel bars for safety. This design of window will increase airflow to your stable without causing a draught making life better for your horse.

TOP AND BOTTOM STABLE DOORS 1235mm wide, 2015mm high with a bottom door height of 1220mm and 62mm thick. Bottom doors are lined with 11mm moisture resistant OSB manufactured to BS5669 and fitted with an anti-bite strip and kickover latch. All doors are hung with 450mm adjustable hinges fastened with 150mm Brenton pad bolts for additional strength held open and secured with a cabin hook. All doors extend to ground level. All ironwork is fully galvanised for protection against the elements.

TACK ROOM DOORS Tack room doors are 900mm wide and 50mm thick and hung with 450mm adjustable hinges fastened with 150mm Brenton pad bolts, held open and secured with a cabin hook. All doors extend to ground level. All ironwork is fully galvanised for protection against the elements.

HAY BARN DOORS are 2400mm wide and 50mm thick. Hung with 450mm adjustable hinges fastened with

150mm Brenton pad bolts, held open and secured with a cabin hook. All doors extend to ground level. All ironwork is fully galvanised for protection against the elements. They are not fitted as standard to the Ideal range.

MOBILE BUILDINGS SLEDGE Fully galvanised steel sledge 80mm x 80mm x 5mm and 80mm x 40mm x 6mm box section under all walls. Anti-flex gussets are located at the corners externally for safety. There are two 50mm diameter galvanised steel tow bars that can be used from either end and are stronger and safer than straps or chains.

AMERICAN BARN

SOFTWOOD TIMBER INTERNAL SECTIONS Loose box fronts clad with tanalised shiplap. 18mm kickboards to 1.2m high and fitted with 1.2m wide heavy duty welded talk bars as standard. A bottom door 1235mm wide and 1200mm high is included. Partitions partitions clad with 18mm kickboard to eaves height and a 1.2m wide talk bar as standard.

STEEL INTERNAL SECTIONS Loose box fronts are fitted with 38mm softwood infills to 1.2m and heavy duty bars above, a bottom stable door is included. Loose Box partitions are fitted with 38mm softwood infills to eaves height and a 1.2m wide talk bar as standard. Fully galvanised steel.



Elite Range Specifications

HEIGHT To the eaves is 2510mm including the plinth. Ridge heights vary due to roof pitch and building size.

TREATMENT Our preferred method is high pressure commonly known as tanalised or CCP. Non-toxic to animals.

FRAMEWORK We use 100mm x 50mm tanalised C16/C24 strength graded planed timber at 610mm centres. Double uprights on all doorways.

SHIPLAP CLADDING We only use 19mm 5th-grade Scandinavian redwood, fully tanalised for longevity and resistant to fungal decay and insect attack.

LINED ONDULINE ROOFING Our standard offering is black Onduline laid over 11mm moisture resistant OSB manufactured to BS5669 fixed to 120mm x 47mm purlings at 610mm centres with a minimum of 15° degree pitch. One sun reflective clear roof sheet is fitted to all units, except tack rooms.

FRONT CANOPY 1.2m Fully supported by a prefabricated plated truss.

GUTTERING Fitted to the front and rear of all buildings as standard, we use half round black guttering and include the necessary down pipes.

KICKBOARDS TO EAVES HEIGHT 18mm All stables are lined to eaves height. As standard we use 18mm moisture resistant OSB manufactured to BS5669. If you would prefer 12mm five layer ply in place of the OSB this can be fitted at no extra cost. Please inform our sales staff when placing your order. All tack rooms and hay barns are also lined to eaves height.

VENTILATION We have created a unique arbour vent for

our stables that is fitted under the overhang. Jon William Stables are market leaders in well-ventilated stabling this makes the building not only better for your horse, but will make it last longer too.

RAINWATER SKIRT Made from highly durable uPVC, our rainwater skirt is fitted behind the external cladding and overhangs the plinth. This prevents any water ingress.

DAMP PROOF COURSE The DPC is fitted to the underside of all sole (bottom timber) plates.

FIXING TO BASE Two heavy duty anchor brackets are fitted to the uprights of each 3.6m wall. These are then bolted to the base using mechanical fixings.

WINDOWS Windows measure 600mm wide x 955mm high the standard six blade louvre window is fitted with galvanised steel bars for safety, providing increased airflow to your stable without causing a draught and making life better for your horse.

TOP AND BOTTOM STABLE DOORS are 1220mm wide, 2205 high with a bottom door height of 1255mm. Constructed using a steel frame with 150mm x 38mm thick Iroko hardwood inserts set in an outer steel door frame. Bottom doors are fitted with a kickover latch. All doors are hung with adjustable hinges fastened with 150mm Brenton pad bolts for additional strength, held open and secured with a cabin hook. All doors extend to ground level. All frames and ironwork are fully galvanised for protection against the elements.

TACK ROOM DOORS are 895mm wide, steel framed with 150mm x 38mm Iroko hardwood inserts and are set in a steel door frame. All doors are hung with adjustable hinges and secured with a British Standard five lever mortice lock

and held open and secured with a cabin hook. All frames and ironwork is fully galvanised for protection against the elements.

HAY BARN DOORS 2400mm wide, 2205mm high steel framed with 150mm x 38mm Iroko hardwood inserts. Set in a steel door frame. All doors are hung with adjustable hinges and secured with a British Standard 5 lever mortice lock, held open and secured with a cabin hook. All frames and ironwork is fully galvanised for protection against the elements.

MOBILE BUILDINGS SLEDGE Fully galvanised steel sledge 80mm x 80mm x 5mm and 80mm x 40mm x 6mm box section under all walls. Anti-flex gussets are located at the corners externally for safety. There are two 50mm diameter galvanised steel tow bars that can be used from either end and are stronger and safer than straps or chains.

AMERICAN BARNES

STEEL INTERNAL SECTIONS Loose box fronts are fitted with 38mm infills to 1.2m and heavy duty bars above, a side hung bottom door is included. Loose box partitions are fitted with 38mm infills to 1.2m and heavy duty bars above. A choice of traditional or Victorian style fronts and softwood or hardwood infills are available.



Optional Features

PLINTH SYSTEM A solid platform upon which to build is essential and we strongly recommend that you start with a concrete base. This will enable us to fit our unique plinth system consisting of a galvanised steel plinth and a quality damp proof course which will protect the bottom of your new building. We advise against brickwork as our clients have had problems with buildings moving and bricks becoming loose especially on the doorways. We will advise you of the exact dimensions of your base.



STABLE ANTI-CRIBBING PACK Full height kickboards and top door lined. Top door anti-bite strips which include steel lining to door stop, top door opening and leading edge of the top door and bottom door anti-bite strip extending 450mm to the front (items available separately if required).



TALK BARS These are highly recommended for the social benefits of your horses. They are also a popular and effective way of calming anxious animals as well as creating greater light and air movement. Created from galvanised heavy duty steel bars and angled steel.



GUTTERING Fitted as standard to the front of all our buildings, we also offer rear guttering giving you all-round drainage for your building.



SOFTWOOD TOP REAR DOOR Adding top stable doors to the back of your building is a superb way to increase air flow. To protect your building further we include anti-bite strips around the top door opening.



HARDWOOD TOP REAR DOOR Steel framed with 150mm x 38mm thick Iroko hardwood inserts set in a steel door frame. Adding top stable doors to the back of your building is a superb way to increase air flow.



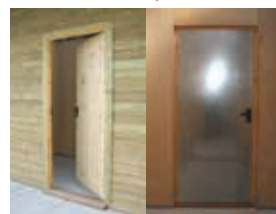
HARDWOOD TOP REAR DOOR AND LOUVRE WINDOW COMBINATION Steel framed with Iroko hardwood inserts and a six blade louvre window. Adding this combination to the back of your building is a superb way to increase air flow and light.



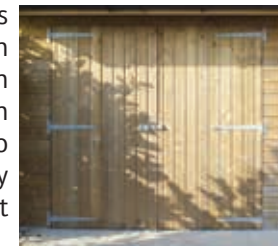
REAR WINDOW Adding louvre windows to the back of your building is a superb way to increase air flow and light to your stable.



TACKROOM SECURITY PACK Unfortunately in this day and age everyone has concerns about security. We offer our hugely popular security pack which features a five lever mortice lock, concealed hinges, internally enclosed trusses and a fully-framed ledge and braced door backed with galvanised steel and mounted in its own frame.



HAY BARN DOORS Softwood side hung double doors are 2400mm wide with a height of 2010mm. All doors are hung with 450mm hinges fastened with 150mm Brenton pad bolts for additional strength and held open and secured with a cabin hook. All doors extend to ground level. All ironwork is fully galvanised for protection against the elements.



EXTENDED CANOPY 1.8m or 2.4m. Add a touch of extra style and protection from the weather with our extended canopy with ornate supporting posts and curved braces.



STADDLE STONES Made from high quality Bath stone. Add a touch of individuality to your extended canopy.

LINED CANOPY Clad with hardwood faced ply or shiplap. If you choose this option we recommend additional ventilation is added as the arbour vent will be blocked off. This can be done with a rear window or top rear door.



COLOURED ONDULINE Planning conditions may dictate that you require coloured roofing, or you may wish to match your new building colour scheme with an existing one. Either way, we can supply Onduline high-quality roofing sheets in red, brown or green.



FELT SHINGLES Alternatively, you may prefer an attractive felt shingle roof to add a touch of originality. We will elevate the roof pitch to 22.5° degrees and add gable vents to aid ventilation to your stables.



POLYCARBONATE ROOF We have designed a unique roof structure allowing us to incorporate polycarbonate triple wall bronze roof sheets into a felt shingle roof. What this means is you can have an attractive felt shingle roof and roof lights, something not normally available with this type of roofing material.



WESTERN RED CEDAR SHINGLES Shingles have been used for hundreds of years and have proven their durability in all kinds of climates. They can be used to create individual buildings and their rich, warm colour and texture blend beautifully in any natural environment. We will elevate the roof pitch to 22.5° degrees and add gable vents to aid ventilation to your stables.



TRANSLUCENT ROOF SHEETS A cost-effective method of adding additional light, Onduline's sun reflective translucent roof sheets will assist with clipping and other intricate jobs. One sheet is included in all Elite range units.



BOX PROFILE ROOFING Single skin box (trapezoidal) profile sheets with a polyester paint finish for the external face. Various colours available.



CLOCK TOWER All our towers feature fluted pillars and louvred sides. Dials can be fitted on as many sides as required. The roof and finial is moulded from a lead original in GRP composite using metal powder to simulate lead whilst reducing weight and cost.

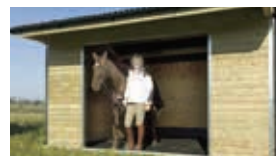


Roman or Skeleton dial designs (with optional illumination) can be specified, and the tower can also include digital bell chimes or real bronze bells.

RUBBER FLOOR MATTING Our premium moulded rubber stable mats has an attractive anti-slip pattern design on one side and a wide ribbed pattern on the reverse to facilitate drainage. Fitting rubber stable matting is becoming more popular as people realise the obvious benefits to horses and owners alike. Rubber matting gives great insulation of the floor and protection to your horse, which means as much as 80% less traditional bedding is needed.



EVA WALL PROTECTION Heavy density foam cushioned is a high quality dense and durable expanded EVA foam wall protection, giving ultimate protection for your horse.



MOBILE ANTI-BITE STRIPS Galvanised steel strips to protect the openings and four external corners of your building also creating additional strength.



MOBILE GROUND ANCHORS Four heavy duty galvanised steel anchors to secure your building in exposed areas.

MOBILE FRONT GATE Galvanised steel, seven bar national farm gates, boarded with plywood for additional safety. Our gates can be lifted off the hinges for storage if required.



MOBILE PARTITION GATE As an alternative to a full height partition, this option gives greater flexibility, opening onto the back wall and easily secured with a hold back catch. Lined with ply for safety.



MOBILE SLIDE RAILS As an alternative to a gate you may choose a pair of 95mm x 45mm pressure treated slide rails held in place with a gravity latch.



MOBILE TACK ROOM PARTITION Supplied with a galvanised steel cross beam to protect the bottom of the section. A tack room partition enables a storage area to be created within our mobile shelters.



MOBILE STABLE CONVERSION Convert your shelter into a stable with the addition of this removable panel which comprises a top and bottom door and fixed window. Offering greater flexibility to your shelter.



BESPOKE At Jon William Stables we pride ourselves on our unique features and innovative designs. If you have an idea or a feature you would like incorporated into your build please feel free to challenge our design department.

Doing Business With Jon William Stables

We understand that selecting the right product for your can be both frustrating and confusing, however we are keen to explain why we are different to other manufacturers. On the previous pages, we have explained our brand principles, and here we want to give you a little bit more insight into why you might like to do business with Jon William Stables.



ABOUT OUR WOOD We work with one of the most beautiful natural products in the world – wood – and it is important to start with some information and knowledge about the material used to create your building.

Essentially, wood is either hardwood or softwood. You can also create compounds, such as chipboard, plywood and oriented strand board.

Softwood is either redwood or whitewood. Redwood, due to its grain, gives a better machined finish and is therefore graded for its visual attributes. Grading is based upon the size, frequency and position of the knots. These are the visible areas where branches or buds have grown from.

There are five redwood grades of timber, these being unsorted, 4th Russian, 5th Scandinavian, 6th Scandinavian and 6th Russian. Each has its own specific use – for example, unsorted is used for furniture such as tables and cabinets and is of the highest quality, and will feature very few knots.

6th Scandinavian has larger and more frequent knots, and can suffer ‘deadknots’ which fall out after a period of time, and for this reason is used for garden sheds, fencing and fence posts.

6th Russian is very poor quality, and used for pallets, packaging quality timber and toilet paper.

Between these extremes, we find 4th Russian and 5th Scandinavian. Generally speaking, within the timber industry, it is accepted that 4th is not quite as good as 5th – the reason being that it is less consistent and can therefore feature occasional ‘deadknots’ and some larger knots.

The uses of both grades tend to be such home items as skirting boards, window frames, softwood doors and banisters – the finishing touches.

Whitewood does not quite have the finished visual appeal of redwood, and is graded on structural strength. The grades are C16 or C24, with C24 being the strongest.

Essentially, the grading is based upon the grain pattern of the wood. The dark lines running through the timber indicate the slow winter growth, and the wood here is stronger than the light areas which represent the faster summer growth period. Therefore, the tighter the rings – those ‘dark lines’, the stronger the wood.

Both grades are used extensively for joists, load bearing walls, partitioning and roof trusses.



With all this information in mind, we always select the finest 5th Scandinavian for shiplap (external cladding), windows and door cladding – the visual part of the building, exactly as you would find in your house!

Structurally, we use a combination of C16/C24 for the

framework, roof purlings, trusses and door frames – again, exactly as you would find in your own home.

TREATMENT & PRESERVATIVES Wood can be a source of food for decay fungi and certain species of insects, so it is important to make sure that all the components of your building are treated.

There are three generally accepted methods of preserving the timber; pressure sprayed, dipping and pressure impregnation.

Pressure sprayed – ie timber sprayed under pressure – does not give a very good finish, and will often need redoing on a regular basis.

Dipping, whereby the timber is dipped into a tank and allowed to dry, is most commonly used for fencing, fencing posts and sheds.

Pressure impregnation falls into two categories – low pressure and high pressure.



Our preferred method is high pressure – commonly known as TANALISED® or CCP. The raw timber is transferred into the treatment vessel, and the air is removed from both vessel and the wood. The vessel is then filled with preservative and pressurised, forcing the preservative into the timber.

This is the only system that really ensures your timber is fully preserved.

If you wish to change the colour or retreat your building we recommend you wait a minimum of two months to allow the building to dry out.

ENVIRONMENTAL CONCERNS Timber is renewable, biodegradable, non-toxic, energy efficient and greenhouse gas friendly. Scientific studies show that it is the environmental material of choice as well as being one of the oldest, most versatile and natural materials known to man.



Jon William Stables is a member of TRADA (Timber Research And Development Association) and is fully committed to providing very high quality products supplied only from well-managed and sustainable resources. We support the independent certification of sustainable forestry, and we work to link the increasing demand for independently certified sources with an expanding global supply base. Sustaining the forest reserves is critical, both to continued prosperity and global environmental stability and as such, we ensure that all our suppliers are members of the Timber Trade Federation and are signed up to the environmental code of practice, which encourages improved standards of conduct and condemns illegal logging practices.

The ultimate responsibility for forest policy lies with the Government and people of the forested countries as they have the task of balancing environmental, economic, social and political needs. However, Jon William Stables firmly believe that we have a huge responsibility to customers, suppliers and staff to base all our commercial activities on properly managed and sustainable forests.

Therefore, Jon William Stables does not source wood or wood products from:

- Forest areas where traditional or civil rights have been violated.
- Non-FSC certified forest areas or non-PEFC certified areas.
- Genetically modified (GM) trees.
- Illegally harvested wood.
- Natural forests that have been converted to plantations or non-forest use.



DELIVERY We have a range of delivery vehicles, 6m long x 2.2m wide and 8m long x 2.5m wide 7.5 ton lorry's and a 10m long 2.5m wide rear wheel steer 25 ton lorry. These vehicles are NOT off-road vehicles.

To avoid additional charges please ensure that the site allows safe access, e.g. a hardcore track or a tractor is available to tow the delivery vehicle into and out of the site. Due to health and safety regulations we can only carry buildings a short distance.

Date and time of delivery are as accurate as possible, however occasionally there may be delays, usually due to adverse weather conditions. For this reason, unless stated

otherwise, quoted delivery dates are not part of the terms of any contract. No reduction in price will therefore be made for late delivery.

DISCLAIMER We are continually looking at ways to improve the construction of our buildings, and as such some specifications may change. With this in mind, you can rest assured that the information above, whilst correct at time of print, will be the minimum specification of your building. We will be delighted to inform you of any improvements we have been able to make.

We hope this brochure has explained why you should buy from us, and now you can select which product is perfect for you.





Call 01380 850965

JonWilliamStables.co.uk

enquiries@j-w-s.co.uk

Head Office:

Jon William Stables • Netherstreet • Bromham • Chippenham • Wiltshire • SN15 2DW

Registered office:

Jon William Stables Ltd • 1 Penleigh Road • Westbury • Wiltshire • BA13 3QB.

Registered in England. Company Registration 06821404.